

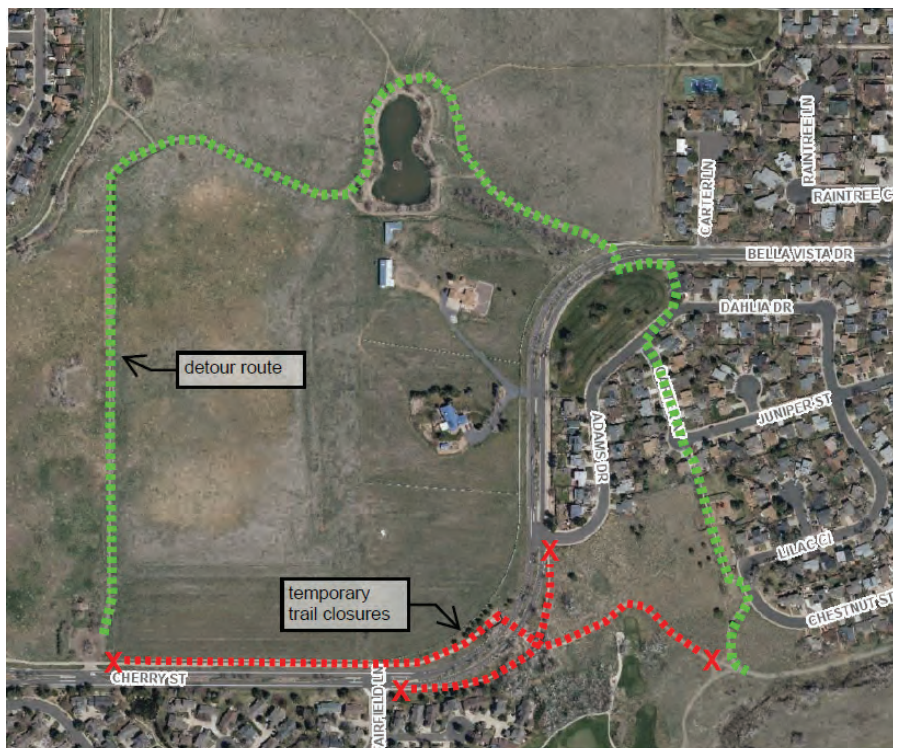
CLOSED

TEMPORARY TRAIL CLOSURE

MON. 9/23 - FRI. 10/4
7 a.m. - 5 p.m.



**Please use an
alternate route.**



**Questions? Contact Bryon Weber at 303-335-4736
or BWeber@LouisvilleCo.gov
www.LouisvilleCo.gov**