

Parks & Public Landscaping Advisory Board Agenda

**February 7, 2024
Library Meeting Room
951 Spruce Street
6:30 PM**

Members of the public are welcome to attend and give comments remotely; however, the in-person meeting may continue even if technology issues prevent remote participation.

- You can call in to **+1 408 638 0968 or 833 548 0282 (Toll Free)**, Webinar ID # 885 1622 9475
- You can log in via your computer. Please visit the City's website here to link to the meeting: www.louisvilleco.gov/pplab

The Board will accommodate public comments during the meeting. Anyone may also email comments to the Board prior to the meeting at AMcneal@LouisvilleCO.gov.

- I. Call to Order
- II. Roll Call
- III. Approval of Agenda
- IV. Approval of Minutes
- V. Public Comments on Items Not on the Agenda
- VI. Advisory Board Introductions
- VII. Finance – Open Space and Parks Tax update
- VIII. Planning- Comp Plan overview
- IX. 2024 Work Plan - finalization

Persons planning to attend the meeting who need sign language interpretation, translation services, assisted listening systems, Braille, taped material, or special transportation, should contact the City Clerk's Office at 303 335-4536 or MeredythM@LouisvilleCO.gov. A forty-eight-hour notice is requested.

Si requiere una copia en español de esta publicación o necesita un intérprete durante la reunión, por favor llame a la Ciudad al 303.335.4536 o 303.335.4574.

X. Board Reports

XI. Staff Updates

XII. Median Project Feedback

- In 2023, approximately 75,000 SF was renovated on 88th, Via Appia near Rec Center and McCaslin north of Via Appia with emphasis on fire impacted areas, turf conversion and ash tree replacement. Project costs were ~\$750,000 or roughly \$10/SF.
- In 2024, Council has appropriated \$680,000. Based on an escalated cost of \$11/SF and withholding a 5% contingency, we should be able to complete ~60,000 SF.
- Staff requests PPLAB input on priority areas with 3 options presented in the attached spreadsheet.

XIII. PPLAB By-laws- review purpose statement

XIV. Discussion Items for Next Meeting

XV. Adjourn



Parks & Public Landscaping Advisory Board

Meeting Minutes

January 3, 2024

Library Meeting Room

951 Spruce Street

6:30 PM

I. Call to Order

Meeting Called to order by Chair Ellen Toon at 6:35 PM

II. Roll Call

Present:

Ellen Toon, Chair

Signe Buck

Cynthia Corne

Shannon Mihaly (remote)

Patricia Rogers

John Webb, Acting Secretary

Abby McNeal, Parks Superintendent

Adam Blackstone, Director Parks, Recreation & Open Space

Absent:

Jodi Ash

City of Louisville

Parks Division 749 Main Street Louisville, CO 80027

303.335.4774 (phone) www.LouisvilleCO.gov

Guests:

Deborah Fahey, Louisville City Council

III. Approval of Agenda

Moved and Seconded, Motion Passed

IV. Approval of Minutes

Moved and Seconded, Motion Passed

V. Public Comments on Items Not on the Agenda

None

VI. Selection of Officers for 2024

John Webb asked to be relieved of Co-Secretary duties for the coming year, Shannon Mihaly will continue as Meeting Secretary, with Patricia Rogers assuming role of Co-Secretary.

Cynthia Corne was selected as PPLAB Chair, replacing Ellen Toon, who has served as PPLAB Chair for seven years. Ellen noted that PPLAB Committee Guidelines specify that Chair should be replaced annually.

Ellen will serve as Committee Vice Chair.

PPLAB thanked past Officers for their service, including Laurie Harford, who has served as Committee Secretary and Co-Chair.

City of Louisville

*Parks Division 749 Main Street Louisville, CO 80027
303.335.4774 (phone) www.LouisvilleCO.gov*

PPLAB approved 2024 meeting dates, first Wednesday of each month, Library Community Meeting Room, 6:30 PM Start time.

VII. Staff Updates

Abby presented 2023 and 2024 Master Plan to Council at Council's Dec 15th meeting. Adam shared that Council has several new members that are not familiar with the Master Plan document.

City Clerk's office will review bylaws of Advisory Boards.

Revitalization of Louisville's streetscapes on McCaslin crosses functional responsibilities, including Sustainability and Open Space Advisory Boards, Downtown Business Association, Louisville Chamber of Commerce, Louisville Rec Center as stakeholders.

Abby reported that restoration of Enclave and Sunflower parks are in early stages of Design. Adam Blackmore announced that Louisville has won a matching grant from GoCo in the amount of \$500,000 funds for renovation of these two parks that were heavily damaged by the Marshall Fire.

Winter watering is in progress for trees in medians and park areas.

PPLAB should expect a full docket for February meeting, including Advisory Board Work Plan for 2024, which will need to be finalized for presentation to City Council on Feb. 13th, along with Open Space Advisory Board.

Playgrounds:

Parks Department will host GoCo Grant Open House on January 23rd, introducing Park designs for public feedback on Enclave Park from 5 to 6 PM, and Sunflower Park from 6 to 7 PM.

- Took survey data and used to present draft design
- Will compare to public data from that open house

City of Louisville

Parks Division 749 Main Street Louisville, CO 80027
303.335.4774 (phone) www.LouisvilleCO.gov

- Sunflower survey mostly said no to playground; money will be split up between those accordingly
- If there's any money left over, City pays first (extra rolls back to GOCO)
- Sunflower focus is irrigation and plant material
- Storm water management at Enclave could lead to fun playground feature, collaboration with Public Works

Open Space and Parks Sales Tax:

Louisville Community passed the 10-year Open Space and Parks funding package! Open Space and Parks will have separate budget now. Council will be meeting with finance expert next month for overview, Council to approve budget in March. Louisville's sales tax has seen 10% growth, in particular from online sales from Amazon.

Capital Projects:

Capital projects funded next for next year include two playground renovations, plus continued median renovations.

Master Long Range Plan approved, will be included in City Comprehensive plan, which is under preparation by Council.

Funding is available for 2 ½ Park Signs, City Council supports replacement of Annette Brand and Centennial Park Signs.

Arboretum improvements:

Chris has ordered replacement sign for trees.

Park Renovations:

Parks Dept. proposed some modifications to reduce costs of planned renovations at Joe Carnival Park. PPLAB provided feedback on options for equipment modifications and equipment removal. PPLAB approved wood chip setting for swing sets. Council Member Fahey noted that kids love the digger toys.

City of Louisville

*Parks Division 749 Main Street Louisville, CO 80027
303.335.4774 (phone) www.LouisvilleCO.gov*

Notes on Joe Carnival:

- moved away from natural wood climbers
- Went with most natural-looking for main playground
- Meets multiple age groups, slides, digger, net climber, moved away from global spinner
- relocate swings - what combo of swings - 2 belts, 1 bucket, 1 inclusive
- Maybe synthetic turf depending on budget
- Current swing location would be grassed in and then swings would be moved
- A bit over budget so going to Council for overage request

At Meadows Park, sand pit areas will be replaced with engineered wood chip fill, and accessibility features will be included with belt and basket swings. Group swing/sway feature will also be included. Construction to occupy Summer through to Fall.

Comments from PPLAB member:

Hecla Lake looks sad, with not a lot of water. Staff replied that is due to winter drawdown of this irrigation storage pond, which will refill in spring, restoring the local habitat for birds and sunflowers. There may be a possibility for some reclamation and habitat improvement at Hecla Lake.

VIII. Board Updates

Bee City Committee:

John reported that Bee City has scheduled three local experts to speak on “Introduction to Pollinators,” “Pollinator Gardening,” and “Creating Pollinator-Safe Ecosystems,” to present at the Rec Center on the evenings of January 30th, and February 5th, 6:00 PM to 7:30 PM at the Rec Center, and Thursday evening, February 5th, at 6:00

City of Louisville

*Parks Division 749 Main Street Louisville, CO 80027
303.335.4774 (phone) www.LouisvilleCO.gov*

PM to 7:30PM at the Louisville Library, respectively. Bee City Committee is looking to City Staff for assistance in promotion and registration for these events.

Abby advised PPLAB that Parks Horticulture Staff has prepared a revised native plant list for Louisville, including larval host plants for butterflies, which will be available on the City Website.

Bee City Committee also discussed creation of a Pollinator Garden at Louisville Elementary, including presentations and workshops at the school by staff of the Butterfly Garden, and possible grant funding of this program

Bee City Committee plans to continue the successful Pollinator Art Contest with Elementary Schools in Louisville. This year may feature multi-media entries.

Advisory Board Intersection Study:

Cynthia gave a preliminary report of her study of Louisville Advisory Board intersections/overlap. PPLAB bylaws state as follows:

The Parks and Public Landscape Advisory Board (formerly the Horticulture & Forestry Advisory Board) represents the Louisville Community in providing guidance and input to City Council, City staff, and consultants on the development and maintenance of parks public landscape projects. The Parks Board also provides advice to City staff on the City landscape master plan, landscape ordinances, and capital projects. Supporting and promoting healthy horticultural practices through public education is also a duty of the Parks Board.

Cynthia noted some overlapping responsibilities between Open Space and PPAB. Less overlap seems to exist with Art in Public spaces, Public Works, Streetscape, City Forester, Youth Advisory Board, and Education advisory boards.

IX. Miscellaneous Items

City of Louisville

Parks Division 749 Main Street Louisville, CO 80027
303.335.4774 (phone) www.LouisvilleCO.gov

- Could we put something out about history on parks and median updates?
Started with Heritage Park
 - History of what we've done and what is upcoming
- Winter watering in medians looks good
- '24 budget released as well as long-range open space and trails plan
- Full docket in Feb - member of finance team will be here to discuss tax division and comp plan presentation
- Need to finalize PPLAB work plan in February; need to present at Feb City Council meeting on 2/13/24, shortly after PPLAB meeting - open space and PPLAB to present

X. Discussion Items for Next Meeting

Updates on Rec Board overlapping responsibilities from Cynthia
Presentations on Finance and Comprehensive Plan
Arboretum renovation/modifications
Future presentation from Golf Course Staff (Rec Advisory Board) and
progress on Audubon certification for Golf Course

XI. Adjournment

Motion to Adjourn made and Seconded, Motion Passed, meeting
adjourned 8:45 PM.

City of Louisville

Parks Division 749 Main Street Louisville, CO 80027
303.335.4774 (phone) www.LouisvilleCO.gov

SUBJECT: COMPREHENSIVE PLAN UPDATE

DATE: FEBRUARY 7, 2024

**PRESENTED BY: JEFF HIRT, AICP, PLANNING MANAGER
ROB ZUCCARO, AICP, COMMUNITY DEVELOPMENT DIRECTOR**

PURPOSE

The purpose of this agenda item is to:

- Provide the Parks and Public Landscaping Advisory Board (PPLAB) with an overview of what a comprehensive plan is,
- Share the plan for the City’s Comprehensive Plan Update launching in 2024, and
- Solicit feedback from PPLAB to inform next steps.

BACKGROUND

The City is launching an update to one of its most important policy documents – the Comprehensive Plan. The Plan is adopted by City Council and required by state law.¹ The Louisville Municipal Code (LMC) Section 17.64.050 also requires a Plan update at least every ten years. The last Plan update was in 2013. The Plan update is an opportunity for the community to refresh the City’s overall vision, values, and policies on a range of topics including but not limited to land use, development, and infrastructure. The time horizon the Louisville Comprehensive Plan will address is about 20 years. The Community Development Department will manage the Plan update in close coordination with City Council, Planning Commission and numerous other City boards, commissions, and departments with a consultant team led by Design Workshop with subconsultants Fehr and Peers (transportation), Economic and Planning Systems (economics analysis), and Spirit Environmental (sustainability, resilience, etc.).



The typical components of a most comprehensive plans that City staff expects will be included in the Plan update are:

- *Existing Conditions Assessments*: this will include analysis of trends related to the built environment (e.g., land use and development), social and economic trends, etc.
- *Vision and Values Statements*: this will be heavily informed by community input to articulate what is most important to Louisville community members that the Plan’s policies should hinge on. This may also take the form of guiding principles. In addition to acting as a foundation for the Plan’s policies, the vision and values statements can

¹ C.R.S. Sec. 30-28-106, 31-23-206.

be a helpful lens for a range of future City decisions like City Council work planning and budgeting.

- *Future Land Use Framework*: this will likely include maps and accompanying policies that establish the City’s desired vision for future land uses. These policies will act as a foundation for land use decisions on both public and private land. For example, the Louisville Municipal Code (LMC) requires that most development proposals (e.g., Planned Unit Developments, rezonings) be evaluated for consistency with Comprehensive Plan policies.



2013 Louisville Comprehensive Plan Cover

- *Future Transportation Framework*: this will include maps and accompanying policies that establishes the City’s desired vision for future transportation connections. The Plan update will build off the City Council adopted 2019 Transportation Master Plan. These policies will act as a foundation for transportation decisions both for City initiated capital improvement projects and incremental transportation improvements as development and redevelopment occurs on private property.
- *Policy Statements by Topic*: as the plan is comprehensive, it will address a range of other topics that emerge from community input. For example, the Plan update is an opportunity to establish or reinforce City policies on topics “adjacent” to land use, development, and infrastructure. The project team anticipates topics like Equity, Diversity, and Inclusion (EDI), environmental sustainability, resilience and hazard mitigation, and housing affordability (among others) to be front and center in the Plan update.

Community Engagement

Community input that reflects a broad range of perspectives and opinions will be vital to the Plan update’s success. The project team is planning on three community engagement “windows” over the course of the project. During each of these windows, there will be a wide range of engagement opportunities with the intent of ensuring broad representation and meeting people where they are at. The table below summarizes each of these engagement windows.

The project team is planning City Council and Planning Commission check-ins and requests for input throughout the project and within each of these engagement windows.

Comprehensive Plan Community Proposed Engagement Windows		
Engagement Window	Engagement Types	Est. Timing (subject to change)
<p>Engagement Window #1: Community Vision and Values</p> <p>The purpose of this engagement window is to raise awareness about the project and solicit community input on the Plan’s vision, values, and goals.</p>	<ul style="list-style-type: none"> • City Council, Planning Commission • City boards and commissions • Focus groups by topic (e.g., development, transportation, sustainability, etc.) • Public events (in person and virtual) • Online engagement through Engage Louisville (e.g., surveys) • Intercept events (e.g., at planned community gatherings) 	<p>First quarter of 2024</p>
<p>Engagement Window #2: Community Choices, Strategy Framework</p> <p>The purpose of this engagement window will be to solicit community input on the Plan’s draft framework, which will include key community choices that will be driven by input during engagement window #1 (e.g., specific land use options).</p>	<ul style="list-style-type: none"> • City Council, Planning Commission • City boards and commissions • Public events (in person and virtual) • Online engagement through Engage Louisville (e.g., surveys) • Intercept events (e.g., at planned community gatherings) 	<p>Fourth quarter of 2024</p>
<p>Engagement Window #3: Draft Plan</p> <p>The purpose of this engagement window will be to inform the community of the draft plan and determine the leadership, timing, and funding considerations and prioritizations of actions.</p>	<ul style="list-style-type: none"> • City Council, Planning Commission • Online information sharing through Engage Louisville (e.g., surveys) 	<p>Early/mid 2025</p>

Active City Projects Related to the Comprehensive Plan

The City has several active related projects that the Comprehensive Plan will need to align with. The table below highlights three notable, active plans slated for future City Council adoption and examples of how the Comprehensive Plan could align with those efforts.

SUBJECT: COMPREHENSIVE PLAN UPDATE

DATE: FEBRUARY 7, 2024

PAGE 4 OF 6

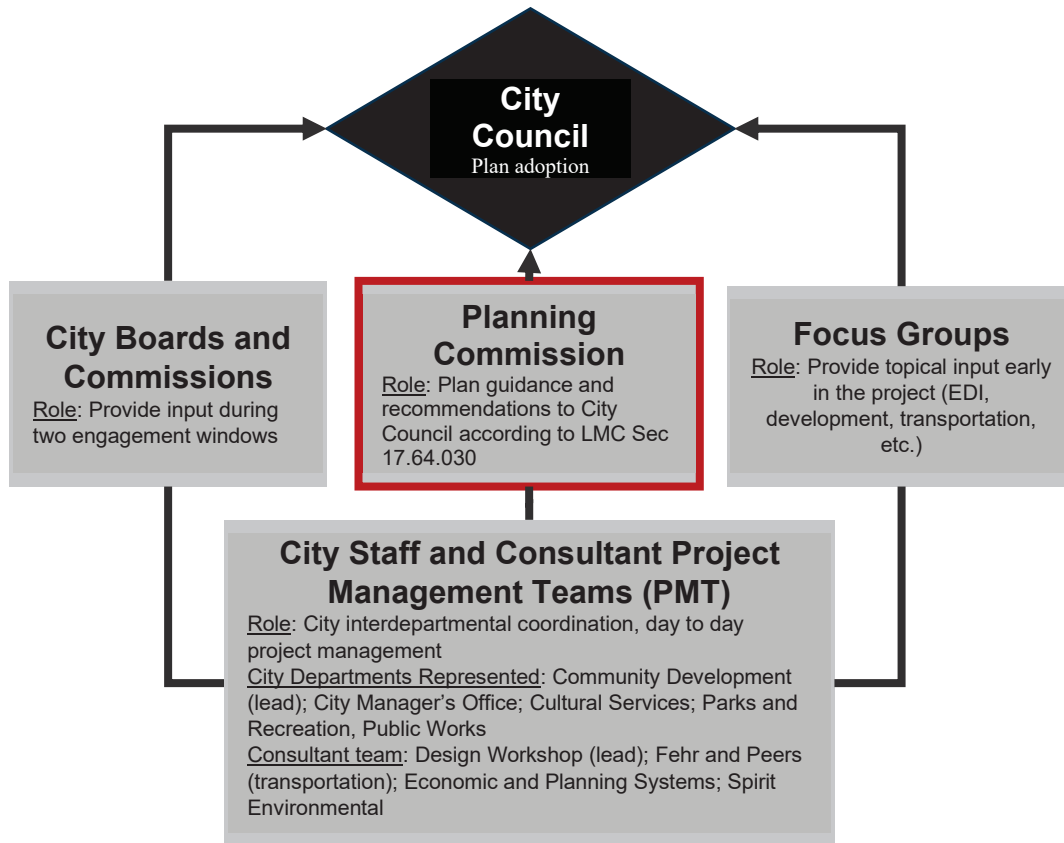
Summary of Select Related and Active City Planning Projects

Related City Plan	Brief Summary	Comprehensive Plan Alignment Examples	Est. Timing
Parks, Recreation, Open Space, and Trails (PROST) Master Plan Update	Guiding document for planning, acquisition, development, and administration of related facilities.	The Comprehensive Plan’s related policies and future land use recommendations should align with any such content in the PROST Master Plan update.	Public launch planned for mid-2024
Louisville Downtown Vision Plan (LDVP)	To enhance public spaces downtown (e.g., streetscape, wayfinding, etc.).	The Comprehensive Plan will likely have a more granular future land use and transportation plan for downtown that will need to align with any LDVP recommendations.	Community engagement planned for early 2024, City Council adoption planned for late 2024
Housing Plan	Includes a housing needs assessment, related policy statements, and an action plan.	The Housing Plan will likely call for increasing opportunities for more residential development in Louisville. The Comprehensive Plan’s future land use component is an important tool to identify which areas of the community may be appropriate for any such land use changes.	Early 2024 City Council adoption

Project Structure

LMC Section 17.64.030 establishes the Planning Commission as the recommending body to City Council to adopt the Comprehensive Plan. Community input summarized in the Community Engagement section above will be supplemented by input from City boards, commissions, and focus groups to inform Plan recommendations to City Council. The project team consists of an interdepartmental group that interfaces with the Plan and the consultants. The graphic below summarizes the proposed project structure.

Comprehensive Plan Update Proposed Project Structure



PROPOSED SCHEDULE AND NEXT STEPS

The Plan update is just getting started with a public launch anticipated for early 2024 and a planned adoption by late Summer/early Fall 2025. An abbreviated proposed project schedule is provided below. Planning Commission and City Council discussions will occur during the engagement windows and throughout the project with specific dates to be determined.

The specific next steps include a public Plan launch starting as early as February 2024. The project team plans to inform the community of the upcoming opportunities for engagement during Engagement Window #1 through the City's social media platforms, newsletters, and direct mailers, among other notification methods.

Proposed Abbreviated Comprehensive Plan Update Schedule (subject to change)							
	2024				2025		
	Q1	Q2	Q3	Q4	Q1	Q2	Q3
Engagement Window #1: Vision and Values							
Engagement Window #2: Choices and Plan Framework							
Engagement Window #3: Draft Plan							
Draft Plan Framework and Key Community Choices							
Draft Plan (* = City Council adoption)							*

REQUESTED PPLAB FEEDBACK

City staff are requesting feedback from PPLAB on the following two questions to inform next steps:

- What does a successful Comprehensive Plan update look like to you?
- What are the top three items that the Comprehensive Plan update should address?

LINKS:

1. 2013 Comprehensive Plan - <https://www.louisvilleco.gov/local-government/government/departments/planning/comprehensive-plans-studies-reports>.
2. Plan Update Engage Louisville webpage: <https://www.engagelouisvilleco.org/comp-plan>.

PPLAB Meeting

February 7, 2024

Citywide Comprehensive Plan Update



Meeting Purpose

1. RAB to gain understanding of project and process
2. Targeted questions to inform next steps



Comprehensive Plan Overview

- Required by state law and city code to be updated every ten years
- City Council adopted policy that is not regulatory but serves important purposes
- Focuses on land use, development, and infrastructure but covers wide range of topics



Typical Parts of a Comprehensive Plan

- Existing conditions
- Vision and values statements
- Future land use and transportation framework
- Policy statements by topic (comprehensive)
- Action plan



Vision and Values

- Community driven statements of what is most important to Louisville
- Act as foundation for plan's policy development
- Examples of how they can be actionable:
 - Policies tied to specific vision/values statements
 - City Council work plans
 - Budgeting



The Vision Statement and Core Community Values

Core Community Values
The following Core Community Values are the foundation upon which the City of Louisville will make decisions and achieve the Community's vision.

We Value...

- A Sense of Community** ... where residents, property owners, business owners, and visitors feel a connection to Louisville and to each other, and where the City's character, physical form and accessible government contribute to a city that is actively involved in the decision-making process to meet their individual and collective needs.
- Our Visible Small Town Feel** ... where the City's size, scale and land use mixture and government's high-quality customer service encourage personal and commercial interactions.
- A Healthy, Vibrant, and Sustainable Economy** ... where the City understands and appreciates the trust our residents, property owners, and business owners place in it when they invest in Louisville, and where the City is committed to a strong and supportive business climate which fosters a healthy and vibrant local and regional economy for today and for the future.
- A Connection to the City's Heritage** ... where the City recognizes, values, and encourages the promotion and preservation of our historic and cultural heritage, particularly our mining and agricultural past.
- Sustainable Practices for the Economy, Community, and the Environment** ... where we challenge our government, residents, property owners, and our business owners to be innovative with sustainable practices on the needs of today are met without compromising the needs of future generations.
- Unique Commercial Areas and Distinctive Neighborhoods** ... where the City is committed to recognizing the diversity of Louisville's commercial areas and neighborhoods by establishing customized policies and tools to ensure that each maintains its individual character, economic vitality, and livable structure.
- A Balanced Transportation System** ... where the City desires to make motorists, transit customers, bicyclists and pedestrians of all ages and abilities partners in mobility, and where the City intends to create and maintain a multimodal transportation system to ensure that each user can move in ways that contribute to the economic prosperity, public health, and exceptional quality of life in the City.
- Families and Individuals** ... where the City accommodates the needs of all individuals in all stages of life through our parks, trails, and roadway design, our City services, and City regulations, to ensure they provide an environment which accommodates individual mobility needs, quality of life goals, and housing options.

Integrated Open Space and Trail Networks ... where the City appreciates, manages and preserves the natural environment for community benefits, including its ecological diversity, its outstanding views, clear cut boundaries, and the interconnected, integrated trail network which makes all parts of the City accessible.

Safe Neighborhoods ... where the City ensures our policies and actions maintain safe, thriving and healthy neighborhoods so residents of all ages experience a strong sense of community and personal security.

Ecological Diversity ... where the City, through its management of parks and open space and its development and landscape regulations, provides biodiversity by ensuring a healthy and resilient natural environment, vibrant plant life and diverse habitats.

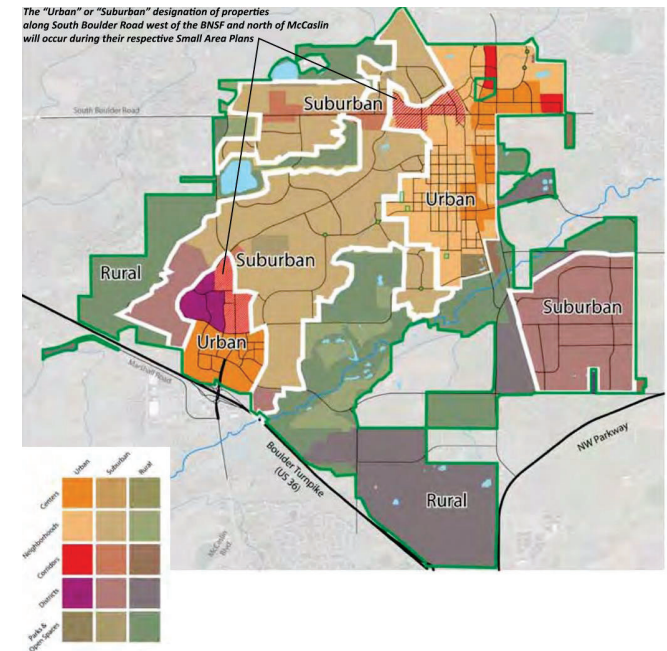
Excellence in Education and Lifelong Learning ... where the City allocates the appropriate resources to our library services and cultural assets and where the City actively participates with our regional partners to foster the region's educational excellence and create a culture of lifelong learning within the City and Boulder County.

Civic Participation and Volunteerism ... where the City engages, empowers, and encourages its citizens to think creatively, to volunteer and to participate in community discussions and decisions through open dialogue, respectful discussions, and responsive action.

Open, Efficient and Fiscally Responsible Government ... where the City government is approachable, transparent, and ethical, and our management of fiscal resources is accountable, trustworthy, and prudent.

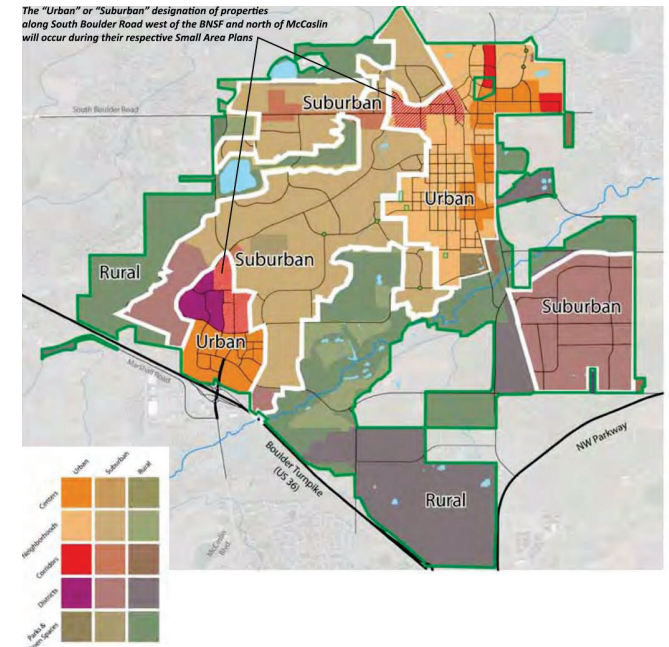
Land Use Framework

- Future land use designations (status quo or calling for changes) that acts as foundation for land use decisions
- Examples of how they can be actionable:
 - Private development requests required to show plan consistency
 - Changes to zoning code to align desired features of places to regulations (design, context, etc.)
 - Future public facilities, land acquisitions



Transportation Framework

- Future transportation system
- Acts as foundation for transportation decisions
- Examples of how they can be actionable:
 - Private development requests required to provide transportation connections
 - Changes to street design standards to align with desired street types
 - Capital Improvements Planning (CIP) for city-initiated transportation projects



Topical Policy Statements

Can be freestanding in Comprehensive Plan or align/reinforce from other City plans on topics like:

- Environmental sustainability
- Equity, Diversity, and Inclusion
- Historic preservation
- Parks, recreation, open space
- Housing affordability
- Economic development and fiscal health
- Recovery and resilience

The Framework

to the City and the entire metro region. The City should work with its neighboring jurisdictions and RTD to provide transit service along HWY 42/56th Street between Lafayette and Bronckfield and introduce transit service to Avista Hospital, the Colorado Technology Center, the Monarch Campus, and, as development occurs, the Phillips 66 property.

Policy TMA-1.7: Walkability is a key ingredient to livable cities and neighborhoods. Great cities and neighborhoods all feature street level experiences that invite and stimulate pedestrian and bicycling activities. Walkability

enhances public safety, fosters personal interactions, improves public health, and increases economic vitality. Louisville has an excellent recreation trail network and generally a high quality walking environment on its City streets. The intent of this Comprehensive Plan is to establish a transportation policy which raises the bar and better integrates the City's recreational trail network with City's street network. This interconnection will help create a more balanced transportation system that serves the entire City and is designed for all users of all ages and ability levels.

Policy TMA-1.8: Louisville has four at grade crossings of the Burlington Northern Santa Fe (BNSF) Rail line. Three of the crossings: Main Street, Griffith Street and South Boulder Road are located within, or immediately adjacent to established residential neighborhoods. The fourth is located at Dillon Road near the Colorado Technology Center and proposed relocation of the St. Louis Catholic Church and School.

Federal Railroad Administration regulations require locomotive horns be sounded for 15-20 seconds before entering all public at grade crossings, but not more than one-quarter mile in advance. This federal requirement preempts any state or local laws regarding the use of train horns at public crossings, unless certain improvements are made to the crossings.

The noise level of the horns negatively impacts the quality of life for residents and employees living and working near the rail corridor. It is a recommendation for the City of Louisville to work with its neighboring jurisdictions and the BNSF to create safe Federal Railroad Administration qualifying upgrades to all four rail crossings in the City. The timing of these investments was tied to the Northwest Rail Corridor improvements. However, because of the uncertainty of the Northwest Rail Project, the City of Louisville should continue to advance implementation of the four crossings improvements necessary for a City-wide Quiet Zone in a strategy separate from the Northwest Rail Study.

Proposed Transit Service Improvements

2013 Comprehensive Plan

PRINCIPLE TMA-2: The City of Louisville should develop and implement area-specific and City-wide transportation plans through an open and collaborative process to achieve the principles and policies outlined above.

Policy TMA-2.1: The Planning and Building Safety Department, Public Works Department and the Parks and Recreation Department shall collaboratively generate multimodal transportation plans for the residential neighborhoods and commercial areas of the City. At a minimum, this work shall include:

- Safe Routes to School
- Parking Management
- Pedestrian Circulation
- Bicycle Circulation
- Vehicular Circulation and Neighborhood Traffic Calming

Policy TMA-2.2: The Planning and Building Safety Department, Public Works Department and the Parks and Recreation Department shall collaboratively generate multimodal transportation corridor plans for HWY 42/56th Street, McCaslin Boulevard, South Boulder Road, and Dillon Road which shall include:

- Long-Term Land Use Vision and Urban Design Assessment
- Near-term and Long-term multimodal transportation performance evaluation
- Parking
- Transit Circulation and pedestrian access
- Pedestrian and bicycle crossings

Policy TMA-2.3: The Planning and Building Safety Department, Public Works Department and the Parks and Recreation Department shall generate a City-wide multimodal Transportation Master Plan that incorporates and consolidates the findings of each neighborhood, commercial area, and corridor plan. The plan shall include:

- Traffic Management and Traffic Calming Program
- Pedestrian Master Plan
- Bicycle Master Plan

- Transit Service Plan
- Primary Corridor Plan
- Transportation Demand Management

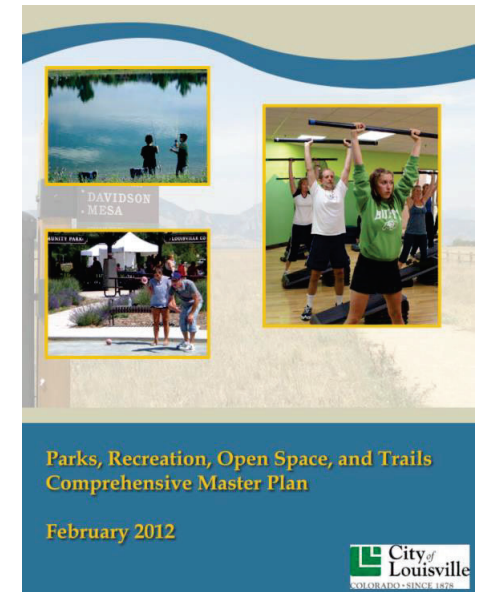
Policy TMA-2.4: The Departments of Planning and Building Safety, Public Works and Parks and Recreation will review and update the current design and construction standards including Resolution 9, Series 1994 (Roadway Construction and Design Standards); and LMC Chapter 12 - Streets and Sidewalks, Chapter 16.16 - Design Standards; and Chapter 17.14 - Mixed Use Zone District.

The review and update will ensure they reflect the best design standards and guidelines to provide flexibility for context-sensitive design. The roadways will be designed within the context of the neighborhood and corridors, recognizing all streets are different. The user, mobility, and land use needs will be balanced and consistent with the context sensitive multimodal transportation policy stated above.



Active Parallel City Projects

- PROST Master Plan Update
- Louisville Downtown Vision Plan (LDVP)
- Housing Plan



PPLAB Topics Interface

Examples of how a comprehensive plan can address PPLAB topics:

- Articulation of community values related to public spaces
- Design standards for street sections, public spaces, private/public interface
- Advancement and/or reinforcement of other PROST Plan and policies

PPLAB Role

- Share feedback during at least two Comprehensive Plan-focused PPLAB meetings.
- Participate in community engagement (events, surveys, etc.)
- Spread the word in the community about the project!
Community input is vital to success.

Community Engagement

Engagement “Windows”

1. Community Vision and Values
2. Community Choices, Strategy Framework
3. Draft Plan



Community Engagement

Engagement Types

1. City Council, Planning Commission throughout
2. City boards and commissions
3. Focus groups (e.g., EDI, businesses)
4. Public events (virtual, in person)
5. Engage Louisville online engagement (e.g., surveys)
6. Intercept events

Schedule

Proposed Abbreviated Comprehensive Plan Update Schedule (subject to change)

	2024				2025		
	Q1	Q2	Q3	Q4	Q1	Q2	Q3
Engagement Window #1: Vision and Values							
Engagement Window #2: Choices and Plan Framework							
Engagement Window #3: Draft Plan							
Draft Plan Framework and Key Community Choices							
Draft Plan (* = City Council adoption)							*

Requested PPLAB Feedback

1. What does success look like to you for this project?
2. What are the top three issues the project should address?



engagelouisvilleco.org/comp-plan

Median Landscape Renovation - Phase Two Budget & Planning

1/29/2024

2024 Budget	\$	680,000
Contingency (5%)	\$	34,000
Available to Contract	\$	646,000

Cost Assumption based on 2023 pricing: \$ 11.00 Per Square Foot

Goals: try to complete whole streets and avoid skipping segments, maximize turf removal and conversion, tree canopy diversification (with ash tree replacement), minimize number of large/mature trees removed

- Option One - Focus on McCaslin north to South Boulder Rd, Complete Via Appia by Police Station**
Large portions of turf, minimal mature trees need to be removed
- Option Two - Focus on McCaslin south to Dillon Rd, Compete Via Appia by Police Station**
High traffic/visibility, Significant number of trees already replaced in prior years
- Option Three - Focus on Dillon Road then McCaslin from Dillon north**
Continue with emphasis on ash replacement, perform work while St. Andrews area still under construction

			Option 1	Option 2	Option 3
Via Appia (McCaslin to Eldorado Ln)					
Area	SF	Cost	Selected	Selected	Selected
McCaslin to Police Station	7,020	\$ 77,220.00	x	x	
Police to Eldorado Ln	2,900	\$ 31,900.00	x	x	
sub-total	9,920	\$109,120.00	\$ 109,120.00	\$ 109,120.00	\$ -

North McCaslin (Washington to South Boulder)					
Area	SF	Cost	Selected	Selected	Selected
Washington to Private Dr.	4,700	\$ 51,700.00	x	x	
Private Dr. to Alder	3,900	\$ 42,900.00	x		
Alder to 80th	9,100	\$ 100,100.00	x		
80th to Copper Hill	9,695	\$ 106,645.00	x		
Copper Hill to South Boulder	2,980	\$ 32,780.00	x		
sub-total	30,375	\$334,125.00	\$ 334,125.00	\$ 51,700.00	\$ -

South McCaslin (Via Appia to Dillon)					
Area	SF	Cost	Selected	Selected	Selected
Via Appia to Cherrywood	13,200	\$ 145,200.00	x	x	
Cherrywood to Century	5,700	\$ 62,700.00	x	x	
Century to Balfour	6,800	\$ 74,800.00		x	
Balfour to Elevations	4,550	\$ 50,050.00		x	x
Elevations to Cherry	6,650	\$ 73,150.00		x	x
Cherry to Conoco	6,330	\$ 69,630.00		x	x
Conoco to Dillon	1,300	\$ 14,300.00		x	x
sub-total	44,530	\$489,830.00	\$ 207,900.00	\$ 489,830.00	\$ 207,130.00

Dillon (McCaslin to 88th)					
Note: McCaslin to Dahlia is narrow concrete (no changes proposed)					
Area	SF	Cost	Selected	Selected	Selected
Dahlia to Coal Creek Circle	6,680	\$ 73,480.00			x
Coal Creek Cir to Club	8,950	\$ 98,450.00			x
Club to Clubhouse Entry	3,150	\$ 34,650.00			x
Entry to St Andrew Ln.	6,200	\$ 68,200.00			x
St Andrew Ln. to 88th	11,980	\$ 131,780.00			x
sub-total	36,960	\$406,560.00	\$ -	\$ -	\$ 406,560.00

Total Cost:	\$ 651,145.00	\$ 650,650.00	\$ 613,690.00
--------------------	----------------------	----------------------	----------------------

Section 3, Purpose and Duties

- A. Advisory.** Except as otherwise provided by City Charter or Municipal Code, the Board shall be advisory in character.
- B. Duties.** The role of the Board will include, but not be limited to, advising the City Council on such matters as:
1. To advise City Council and staff on all matters concerning policy, care, management, and planning on all City properties maintained by the Parks Division;
 2. To advise City Council and staff in determining the community's needs and desires for parks and amenities;
 3. To advise City Council and staff on park development and redevelopment, and review referrals for proposed landscape plans for public areas;
 4. To advise City Council and staff on the capital and operating budget as it relates to the Parks Division.
 5. To review and give comments on City landscape master plans, landscape ordinances and other appropriate landscape documents;
 6. To hear appeals of decisions of the City Forester concerning licensing of arborists and removal of trees as provided in Chapter 8.12 of the Louisville Municipal Code.
 7. To educate the public regarding parks and public landscaping practices appropriate for Louisville.

2024 PPLAB Work Plan

December 1, 2023

Priority	Program Area	PPLAB Recommendations
	Louisville Entryway Signage- McCaslin/ US 36 interchange	Partner with Economic Development, Planning, and Parks to support entryway signage at interchange to promote Louisville
	Arboretum Improvements	Partner with volunteer groups, Parks Division staff to provide enhancements to the property to include demonstration landscaping that promote habitats opportunities for pollinators and fire-wise plantings. Find locations to enhance that create mediation opportunities. Grant opportunities for overall improvements- tree replacement, landscape plantings, and identification signage.
	Bench Marking GMMP	How has the GMMP been implemented, what is needed to support requests to increase maintenance and operations to our Parks and Public spaces as suggested by GMMP. Using the data to support increase in maintenance and operational needs.
	Education	Find educational opportunities as outlined in PPLAB mission to support public's knowledge and understanding of the Parks Operational program. To include a continuation of the Bee City USA designation and community engagement
	Playground projects- Joe Carnival, Meadows, Enclave, Sunflower	Review and support design process for playground projects- Joe Carnival, Meadows, Enclave, and Sunflower- started in 2023
	Collaboration with other Advisory Boards or Commissions	Collaboration opportunities to work with city advisory boards and commission to further enhance the community. OSAB, RAB, LRC- as examples. – started in 2023
	Parks and Open Space Sale use Tax	Sales use tax collaborate with OSAB work planning
	Parks Long Range Plan	Master planning input and support at requested “step” in the process. - started in 2023
	Parks Signage	Prioritize park sign replacement and upgrades- started in 2023.
	PPLAB Bylaws Review and Update	Work with City Clerk, Staff Liaison and Advisory members to review and update PPLAB Bylaws.

Requests are in no order of priority and will adjust to align with City Council Work plan.