

ASCENT COMMUNITY CHURCH/RELISH

S 1/2 SECTION 18, TOWNSHIP 1 SOUTH, RANGE 69 WEST, 6TH P.M.
CITY OF LOUISVILLE, COUNTY OF BOULDER, STATE OF COLORADO

LOCATE EXISTING IRRIGATION MAINLINE AND CONTROL WIRES AT THIS APPROXIMATE LOCATION, CONNECT AND EXTEND FOR NEW LANDSCAPE IRRIGATION AS SHOWN.

IRRIGATION DEVELOPMENT DESIGN NOTES

1. THE IRRIGATION SYSTEM SHALL BE DESIGNED TO PROVIDE PEAK SEASON IRRIGATION WITHIN A SIX NIGHT, EIGHT HOUR PER NIGHT WATERING PERIOD. IRRIGATION SHALL OCCUR BETWEEN THE HOURS OF 10:00 PM AND 4:00 AM.
2. THE MAINLINE SYSTEM WILL BE DESIGNED SUCH THAT VELOCITIES WITHIN THE MAINLINE PIPING DO NOT EXCEED FIVE FEET PER SECOND.
3. THE MAXIMUM FLOW RATE REQUIRED FOR THE ADDED AREA TO THE SITE IS 10 GPM. THE STATIC PRESSURE AVAILABLE AT THE SITE IS TO BE DETERMINED PSI.
4. THE IRRIGATION INFORMATION SHOWN ON THESE PLANS IS CONCEPTUAL.
5. SUBSURFACE IRRIGATION - WHERE REQUIRED BY LOCAL CODES, SUBSURFACE IRRIGATION SHALL BE INSTALLED IN SHRUB BEDS AND/OR NATIVE AREAS LESS THAN 10 FT. WIDE. TURF SHALL ONLY BE LOCATED IN AREAS GREATER THAN 10 FT. WIDE.
6. IRRIGATION SYSTEM SHALL BE FULLY AUTOMATIC AND INCLUDE A WEATHER SENSING DEVICE.
7. IRRIGATION FOR NEW AREAS WILL BE ADDED TO EXISTING IRRIGATION SYSTEM. A SITE VISIT OR AS-BUILT DRAWINGS WILL BE REQUIRED TO DETERMINE SYSTEM CAPABILITY AND LAYOUT.

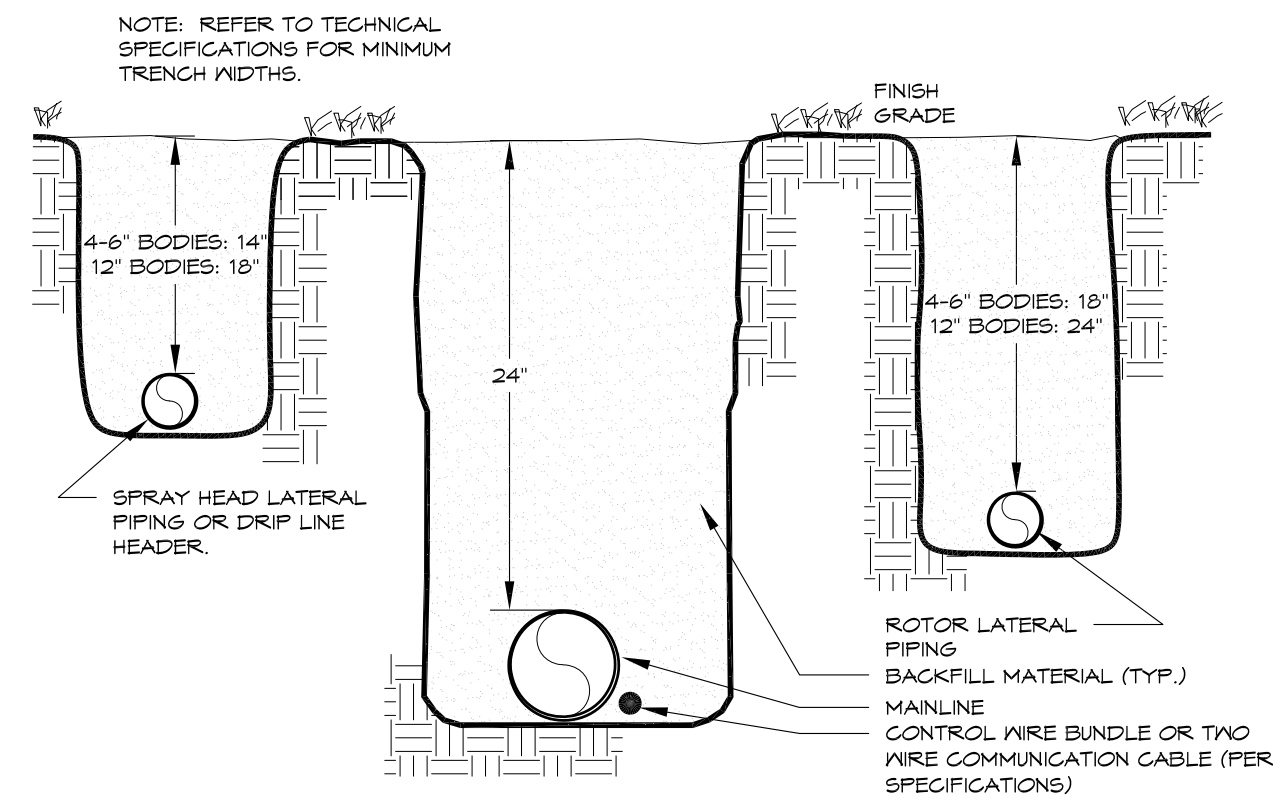
IRRIGATION SCHEDULE

SYMBOL	DESCRIPTION	DETAIL NO.
	ELECTRIC CONTROLLER	
	PVC MAINLINE - 2-1/2" OR SMALLER	1
	PVC SLEEVING	2

IRRIGATION DESIGN STRATEGY

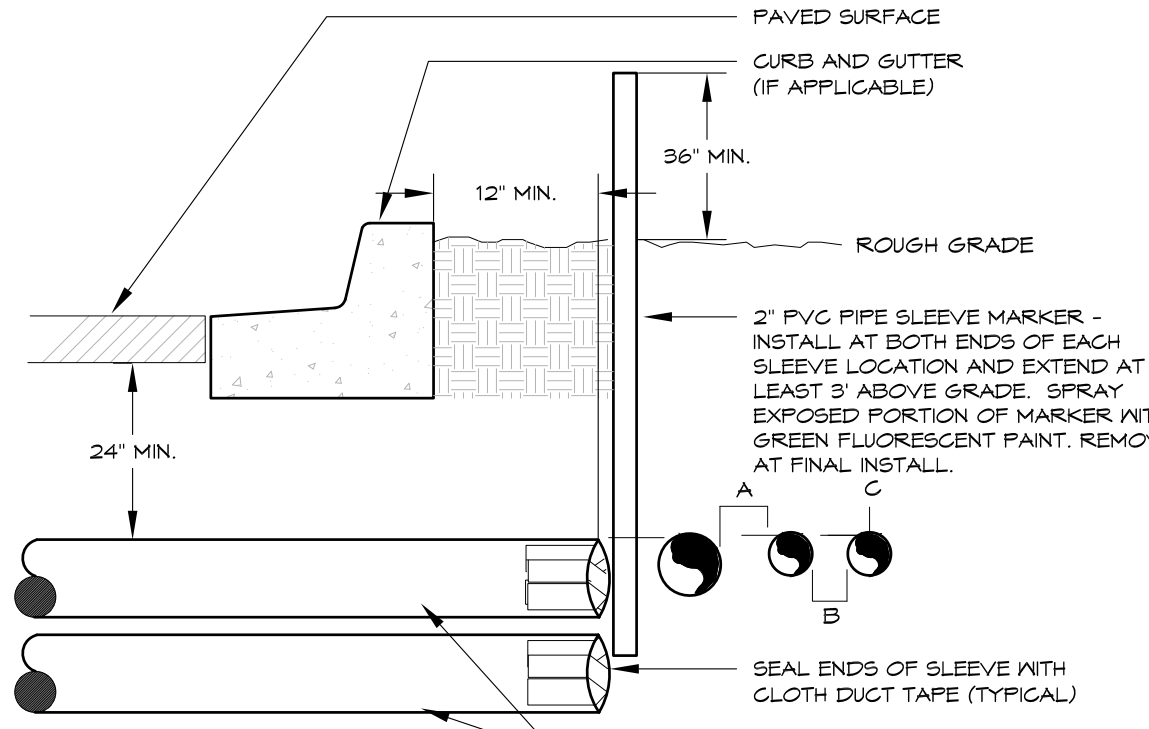
HATCH	DESCRIPTION	AREAS < 6'	AREAS 6'-25'	AREAS > 25'
	TREES & SHRUBS	POINT SOURCE DRIP	POINT SOURCE DRIP	POINT SOURCE DRIP
	PERENNIALS & GROUND COVERS	INLINE SUBSURFACE DRIP	INLINE SUBSURFACE DRIP	INLINE SUBSURFACE DRIP

*SELECTION OF POINT SOURCE DRIP OR INLINE SUBSURFACE DRIP MAY BE DETERMINED BY PLANT DENSITY, GROWTH HABIT OR LOCATION RATHER THAN AREA DIMENSIONS.



TRENCH

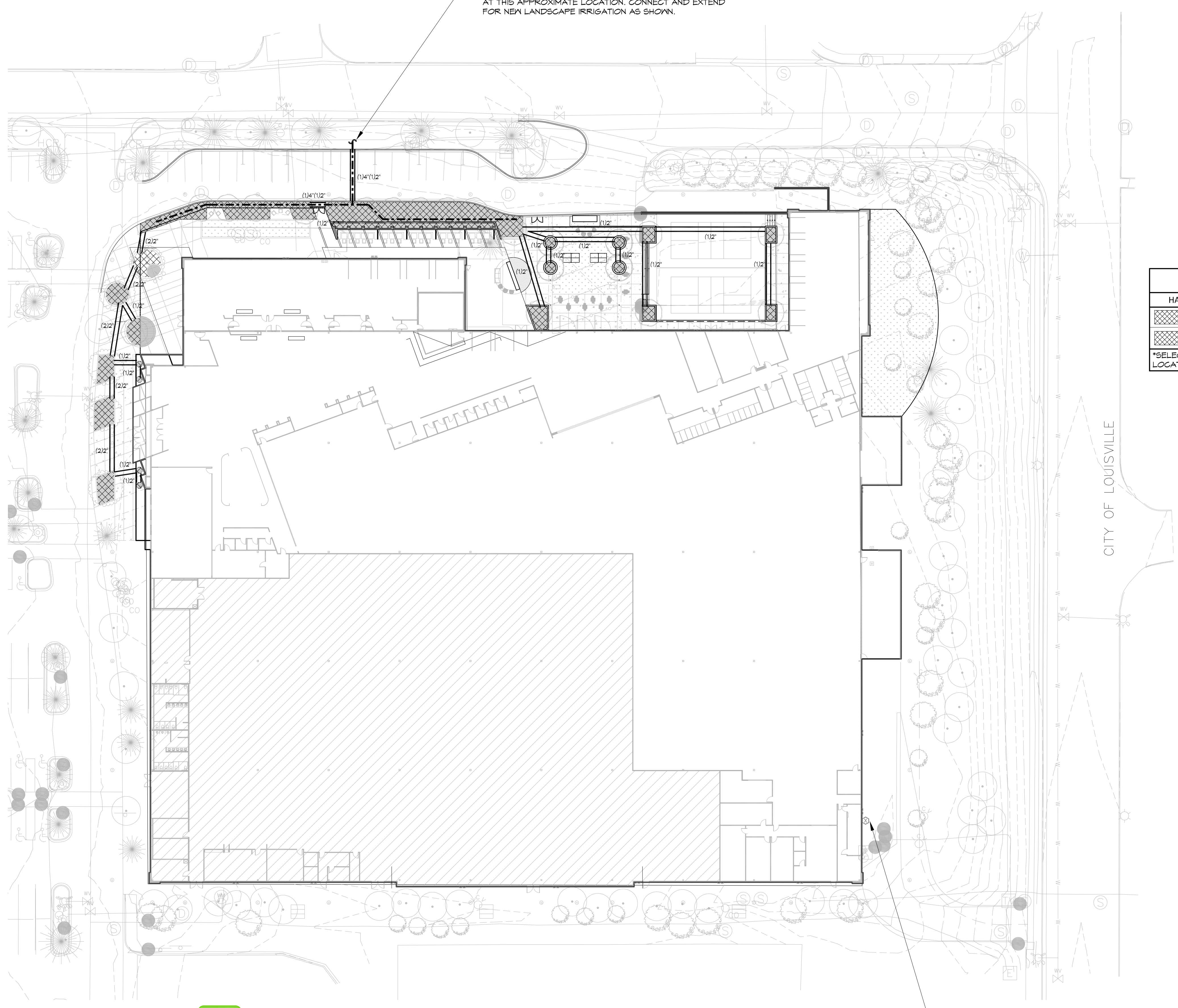
24" MAINLINE



- NOTE:
- ALL SLEEVE MATERIAL PER IRRIGATION SCHEDULE, SIZE AS NOTED ON PLAN.
 - INSTALL SLEEVES IN SIDE-BY-SIDE CONFIGURATION WHERE MULTIPLE SLEEVES ARE TO BE INSTALLED. SPACE SLEEVES 4" TO 6" APART. DO NOT STACK SLEEVES VERTICALLY.
 - CONTRACTOR TO COORDINATE WITH FLATWORK INSTALLER TO BRAND A 1/2" IN SIGNALK OR CURB AT BOTH ENDS OF SLEEVE CROSSINGS.
 - SLEEVING THROUGH OR UNDER RETAINING WALLS, PLANTER WALLS, POND LINING, OR WATER QUALITY AREAS SHALL BE COORDINATED WITH CIVIL WORK AT APPROXIMATE LOCATIONS SHOWN.
 - AN INDIVIDUAL SLEEVE SHALL CONTAIN NO MORE THAN ONE PIPE OR WIRE BUNDLE.

IRRIGATION SLEEVING

TYPICAL



HydroSystems
Irrigation Consulting & Water Management
13949 W. Colfax Ave, Suite 260
Lakewood, Colorado 80401
c: 303.980.5327 www.hydrosystemskd.com

NORTH
SCALE: 1"=30'

811
Know what's below.
Call before you dig.
CALL 3 BUSINESS DAYS IN ADVANCE BEFORE YOU DIG. GRADE, OR EXCAVATE FOR THE MARKING OF UNDERGROUND MEMBER UTILITIES.

RIDGETOP
ENGINEERING & SURVEYING
541 E. Garden Drive, Unit N Windsor, CO 80550
T (970) 683-4552 W ridgetopeng.com

PROJECT TITLE
ASCENT COMMUNITY CHURCH

550 MCCASLIN BLVD
LOUISVILLE, CO 80027
PREPARED FOR
ASCENT COMMUNITY CHURCH

550 MCCASLIN BLVD
LOUISVILLE, CO 80027

SUBMITTAL
PUD AMENDMENT

DRAWN BY: AMC
CHECKED BY: JLK
PROJECT NO.: 20-086-002

REVISIONS

NO.	DESCRIPTION

DATE
07/14/2023

SHEET TITLE
IRRIGATION PLAN

SHEET INFORMATION
1 of 1