



## The Louisville Revitalization Commission (LRC) has financial assistance programs for qualifying businesses.

The Louisville Revitalization Commission (LRC) is the Urban Renewal Authority within the City of Louisville. The LRC's mission is to implement the Highway 42 Revitalization Area Urban Renewal Plan, which aims to reduce, eliminate, and prevent the spread of blight.

### FAÇADE IMPROVEMENT PROGRAM

- **Who's eligible:** Businesses (tenants) or commercial property owners investing in and maintaining permanent exterior building improvements.
- **Types of improvements:** Masonry, windows, outside lighting, restoration/repair of architectural details, awnings or canopies, alley entryways, parking lots, outdoor seating areas, main doors, painting, and signage
- **Funding type:** Reimbursement of project costs between 50% - 100%, depending on total cost of eligible improvements. Projects under \$15K are eligible for 100% reimbursement at project completion
- **Example project:** Installing updated building signage and replacing front windows and door

[LEARN MORE](#)

### PUBLIC INFRASTRUCTURE ASSISTANCE

- **Who's eligible:** Commercial property owners or developers revitalizing or redeveloping properties in a manner that eliminates or prevents blight and stimulates positive effects, such as growth and investment in the area.
- **Types of improvements:** Streetscape elements, such as brick pavers, streetlights, and tree lawns; access and circulation for vehicles, bikes, and pedestrians; streets, sidewalks, underpasses, and parks; and underground and above ground utilities
- **Funding type:** Reimbursement of approved infrastructure investments that have a public benefit. No capped amount of assistance; paid once improvements receive Construction Acceptance from City
- **Example project:** In coordination with a property redevelopment, upgrading the electric service, including new streetlights, and replacing concrete sidewalk and brick pavers

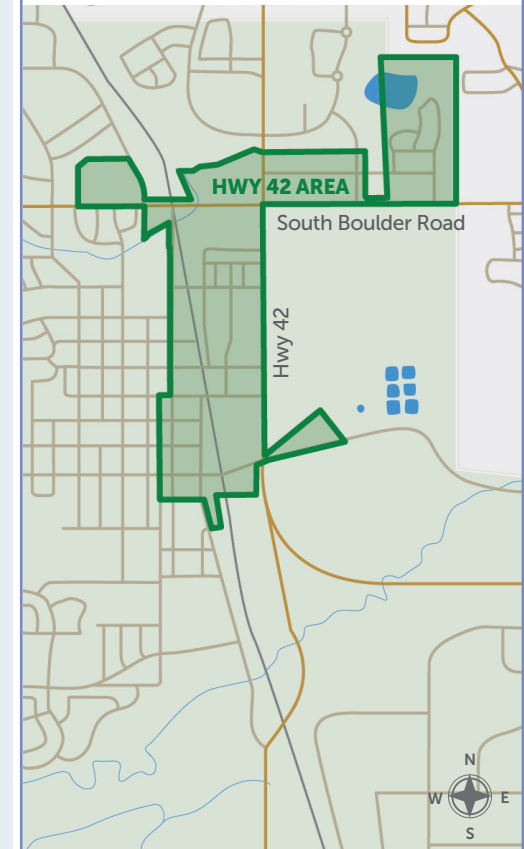
[LEARN MORE](#)

### PROPERTY TAX INCREMENT REBATE ASSISTANCE (DIRECT FINANCIAL ASSISTANCE)

- **Who's eligible:** Commercial property owners or developers supporting projects that may provide exceptional and unique public benefits can explore this opportunity for partnership
- **Types of improvements:** In unique situations, the LRC may fund certain private project components that would not otherwise be feasible without economic support
- **Funding type:** Property tax rebates, based on the incremental increase in assessed valuation on a property, after redevelopment is completed. Assistance requires third-party financial analysis and determination (50% of which is paid for by the applicant)
- **Example project:** Complete redevelopment of an existing building

[LEARN MORE](#)

### IS YOUR PROPERTY OR BUSINESS WITHIN THE HWY 42 AREA?



### QUESTIONS? CONTACT US

**Austin Brown**  
Economic Vitality Specialist

Call **303.335.4529** or email  
[abrown@louisvilleco.gov](mailto:abrown@louisvilleco.gov)

Staff is available to review these programs in greater detail with commercial property owners and businesses. Please contact us today for questions or to schedule a meeting.