

Open Space City Owned	Address	Map Location	Acres	Fishing (Handicap Accessible)	Shelter	Interpretive Kiosk	Wetlands	Lake or Pond	Trail/Dog Leash Area	Special Features
Aquarius	Highway 42 West of Empire Road	17-H	35.0	YES					YES	Coal Creek Trail, Scenic Vistas
Bullhead Gulch	Paschall Drive & W. Hecla Drive	12-B/C	9.7							
Coyote Run	Tamarisk Court & Washington Avenue	9-F	48.0					YES		
CTC	South of Highway 42 at Coal Creek	15-I	17.0					YES		Coal Creek Trail
Damyanovich	Dyer Road	3-K	45.0					YES		
Daughenbaugh	West Cherry Street	9-J	20.0						YES	
Davidson Mesa	McCaslin Boulevard & Washington Avenue	4-I	246			YES	YES	YES	YES	Scenic Vista with 5.5 miles of Designated Trails and DOLA (Dog Off Leash Area)
Dutch Creek	Cherry Street & Adams Drive	12-J	27.0					YES		Coal Creek Trail
Hecla Lake	Hecla Drive	15-C	16.0	YES		YES	YES	YES		Bird Blind
Gateway (no marked trails)	SW Corner S. Boulder Road West of McCaslin Boulevard	6-E	0.5							
Leon A. Wurl Wildlife Sanctuary (Harper Lake)	McCaslin Boulevard & Washington Avenue	6-F	48.0		YES	YES		YES		Harper Lake, Dogs Prohibited, Boating (By Permit Only), Restroom
Hillside	Via Appia	8-H	10.0							
North	Southwest of Monarch Court	9/10-C	81.0					YES		Scenic Vistas
Walnut	Walnut Street or Adams Avenue	11-G	8.4							
Warembourg	Cherry Street & Bella Vista Drive	10-I	60.0		YES			YES		Klubert Warembourg Fishing Pond ADA Parking at Bella Vista Trail Head

Athletic Fields	Address	Map Location	Acres	Parking	Picnic Tables	Playground	Power Outlets	Restroom (*Port-o-let)	Trails (*Access to City Trails)	Additional Features
Cleo Mudrock Park	401 Hutchinson Street	11-H	10.0	YES	YES		YES	YES*	YES	Baseball Softball Fields, Multi-Purpose Fields
Lawrence Enrietto Park	Jefferson Avenue & Griffith Street	12-E	8.8		YES			YES		Baseball Softball Fields, Multi-Purpose Fields
Louisville Sports Complex	1200 Courtesy Road (Highway 42)	14-F	24.0	YES	YES	YES		YES		Baseball Softball Fields, Multi-Purpose Fields, Drinking Fountain
Miner's Field	Highway 42 & South Street	13/14-G	3.2	YES			YES	YES		Baseball Softball Fields, Drinking Fountain
Recreation Center Campus	900 W. Via Appia	7-H	26.0	YES	YES	YES	YES	YES	YES	Recreation Senior Center, Tennis Courts, Inline Rink, Pickleball, Skateboard Park, Arboretum

For Athletic Field or Tennis Court Information/Reservations Contact Louisville Recreation Center 303 335-4909



Memory Park



Community Park (Caranci Pavilion)

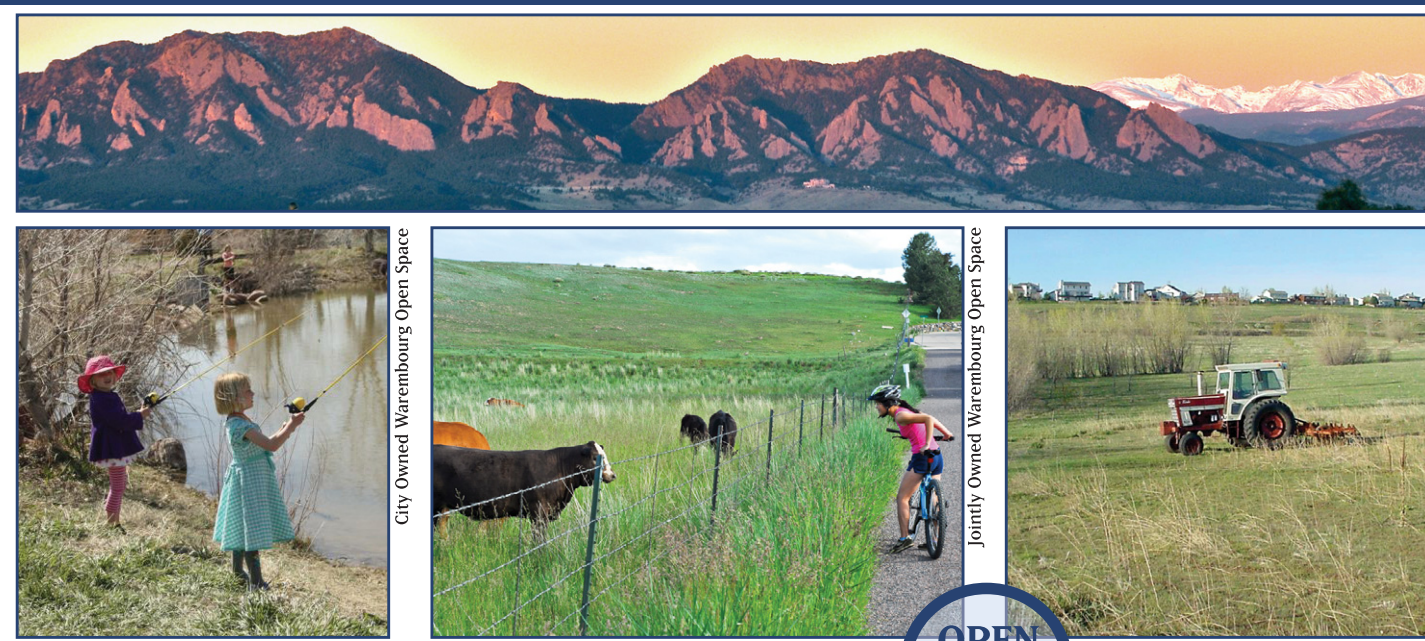


Klubert Warembourg Fishing Pond

PARKS Shelter Rentals	Address	Map Location	Acres	Basketball	Picnic Tables	Playground	Power Outlets	Restroom (*Port-o-let)	Trails (*Access to City Trails)	Additional Features
Annette Brand Park	Plum Circle & Azure Way	7-D	4.3	YES	YES	YES		YES*	Concrete*	Multi-Purpose Field, Sand Volleyball
Arboretum	Via Appia / Eldorado Lane	7-I	5.3		YES			YES	Crusher fines*	Night Lighting
Community Park (Caranci Pavilion)	Bella Vista Drive & Front Street	13-I	16.0	YES	YES	YES		YES	Concrete*	Amphitheater, Bike Hill, Bocce Courts, Dog Park, Drinking Fountains, Horseshoe Pits, Night Lighting, Water Play Feature
Cottonwood Park	Via Appia & S. Boulder Road	11-E	4.0	YES	YES	YES		YES	Concrete*	Multi-Purpose Field
Heritage Park	W. Cherry Street	9-J	7.7	YES	YES	YES		YES		Baseball/Softball Field, Multi-Purpose Field, Sand Volleyball
Joe Carnival Park	W. Willow Street & N. Kennedy Avenue	7-E	1.4			YES		YES*	Concrete*	
Keith Helart Park	200 Monarch Court	10-B	1.1			YES	YES		Concrete*	
Meadows Park	Pearl Court & Orchard Way	8-K	3.9	YES	YES	YES			Concrete*	Disc Golf
Memory Square	Spruce Street & Jefferson Avenue	12-G	2.0		YES	YES		YES*	Concrete*	Outdoor Pool, Bocce Courts, Horseshoe Pits
Pirates Park	Lafayette Street & Jefferson Avenue	12-E	2.0	YES	YES	YES			Concrete*	2 Tennis Courts

PARKS No Shelter Rentals	Address	Map Location	Acres	Picnic Tables	Playground	Trail Access	Additional Features
Centennial Park	Regal Street & Garfield Avenue	11-D	1.3	YES			Port-o-let, 4 Tennis Courts
Cowboy Park	Hecla Drive / Maggie Lane	13-C	2.0	YES	YES		
Dutch Creek Park	S. Adams Drive & S. Carter Avenue	11-1/J	2.0	YES			
Elephant Park	Lilac Circle / Chestnut Street	11-3	1.0	YES	YES	YES	
Enclave Park	1340 S. Enclave Circle	5/6-3	1.8	YES	YES		
Hackberry Park	W. Hackberry Street & S. Tyler Avenue	9-I	0.9				
Hammer Run Park	Lincoln Circle / Lois Drive	12-1	2.0			YES	
Hoover Park	N. Hoover Avenue	10/11-H	1.3				Par Course (Exercise Stations)
Hutchinson Park	Hutchinson Street & Jefferson Avenue	12-H	0.7	YES			Concrete Trail
Kennedy Park	S. Boulder Road & Kennedy	7-E	0.5				
Lake Park	Jackson Court & W. Lafayette Street	10/11-E/F	1.7	YES		YES	Shelter
McKinley Park	McKinley Avenue & McKinley Park Lane	11-F/G	1.3			YES	
Mission Greens Park	101 Lois Drive	11-1/J	2.2				1 Tennis Court
Nawatny Gateway Park	Cannon Street & Lafayette Street	13-F	4.2				Port-o-let
Owl Park	Owl Drive & W. Pine Street	8/9-H	1.0				
Pallino Park	W. Pine Street / S. Polk / Tyler Avenue	9-H/I	0.5	YES			4 Bocce Courts
Pine Street Park	Pine Street-Tyler Avenue / Via Appia	9-H/I	1.8				
Steel Ranch	Kaylix Avenue & Park Lane	13/14-C	1.7				
Sundance Park	W. Hoover Avenue South of W. Elm Street	10-H	4.4				
Sunflower Park	Between Washington Avenue & Arapahoe Circle	6-G	0.5				
Tyler Park	Tyler Avenue North of Buckthorn Way	9-G/H	1.7				
Washington Park	S. Boulder Road & Washington Avenue	8-D/E	0.3				

Parking for all Parks and Open Space is limited to trail access or residential parking. Exceptions are noted using the MAP symbol



The mission of the Open Space Division is to conserve and restore Open Space through land acquisition and management for the protection of natural and cultural resources and provide opportunities for education, volunteering and appropriate passive recreation.

The Open Space program is funded by the City of Louisville for future generations to enrich the experience of living in Louisville and provide opportunities for citizens to reconnect with nature and their cultural heritage while also enhancing their mental and physical well-being.

The City owns or has an interest in more than 2,000 acres of open lands that serve a wide variety of values. Each open space property is designated with one or more classifications: Preserve, Protect, Visitor, and Other. These lands provide visual buffers between local municipalities and support many species of wildlife and diverse plant communities.

The City's 32-mile trail system meanders through some of these open space parcels, such as Davidson Mesa, Coyote Run, Lake Park, and the Leon A. Wurl Wildlife Sanctuary. Another important goal of the Open Space Division is to preserve Louisville's agricultural backdrop by maintaining private farming in more rural areas.

### Coal Creek Regional Trail

A highlight of Louisville's trails is the Coal Creek Regional Trail which runs east to west along Coal Creek in the southern part of Louisville. The Coal Creek Trail is more than 14 miles long and is primarily constructed of soft surface material. The trail runs from Vista Parkway in Erie through Lafayette, Louisville and Superior, where it ties into the City of Boulder's Marshall Mesa Trail System near S. 66th Street. This trail also connects to the 12-mile long Rock Creek Regional Trail System. Louisville is fortunate to have direct access to one of Boulder County's most well-developed and beautiful regional trail systems.



Walnut Open Space Trail



Coal Creek Golf Course

Coal Creek Golf Course is an established daily fee golf course located between Boulder and Denver in Louisville, Colorado. Coal Creek provides golfers with a variety of appealing elements, such as strategically placed bunkers, sparkling water features, elevation changes and dramatic views of the mountains. The combination of these attributes guarantees an exciting and memorable round for players of all levels. Established in 1990 and redesigned in 2015, Coal Creek is a popular golfing destination for the Rocky Mountain region. For more information visit us online at [www.coalcreekgolf.com](http://www.coalcreekgolf.com) or stop by the Pro Shop located at 585 W. Dillon Road.



Louisville Community Park



Louisville Community Park



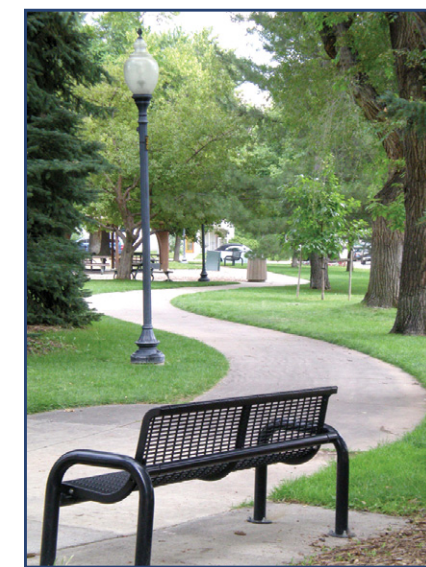
Arboretum

Whether you're after a sense of community, a place to play, or a quiet walk, you'll find what you're looking for in Louisville's parks. With more than 163 acres of parkland, varying in size, use and recreational opportunities, Louisville is committed to providing a variety of experiences for park users. This commitment to parks is one of the primary contributors to Louisville's national recognition as one of the best places to live in America. The park system is connected by an extensive system of trails allowing citizens to walk or bike to City parks and other community amenities from their doorsteps. Louisville encourages you to get outside and enjoy the opportunities that are waiting in our great outdoors.

### PARKS



Louisville Community Park



Memory Square Park

### Park Shelter Rentals

Enjoy the outdoors in one of our many parks in Louisville. Host a birthday party, graduation celebration, family reunion, or company picnic at one of our community parks. Ten of the thirty-two City parks are available for rental reservations. Park shelter rental reservations are processed May 1 through September 30. Information on rental reservations is available on the City website: [www.louisvilleco.gov](http://www.louisvilleco.gov)

# City of Louisville

COLORADO • SINCE 1878

City of Louisville Contacts:  
[www.louisvilleco.gov](http://www.louisvilleco.gov)

City Hall 303-666-6565  
Police/Code Enforcement 303-441-4444  
Fire District 303-666-6595  
Public Works 303-335-4608

### Parks, Recreation & Open Space

Administration 303-335-4735  
Park Shelter Reservations 303-335-4776  
Louisville Cemetery 303-335-4777  
Recreation & Senior Center 303-666-7400  
[www.louisvillerecreation.com](http://www.louisvillerecreation.com)  
Coal Creek Golf Course 303-666-7888  
[www.coalcreekgolf.com](http://www.coalcreekgolf.com)

### Other Contacts:

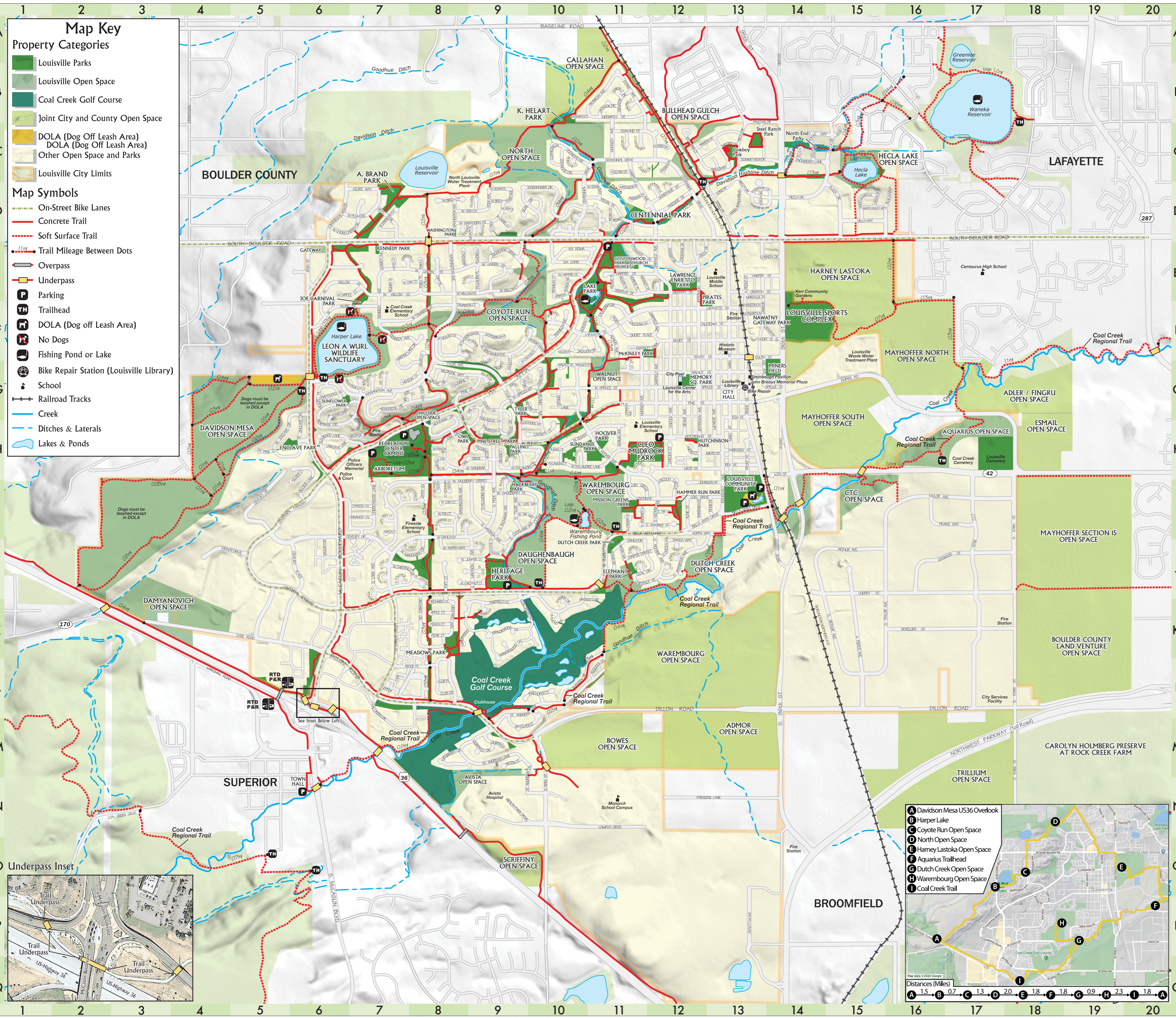
Boulder County Parks & Open Space 303-678-6200  
Lafayette Parks & Open Space 303-665-5588  
Boulder Open Space & Mtn Parks 303-441-3440  
Broomfield Open Space & Trails 303-438-6216  
Superior Parks, Rec & Open Space 303-499-3675



2021 Edition  
Map by Computer Terrain Mapping, Inc.



Terrie Callahan



### Map Key

**Property Categories**

- Louisville Parks
- Louisville Open Space
- Coal Creek Golf Course
- Joint City and County Open Space
- DOLA (Dog Off Leash Area)
- DOLA (Dog Off Leash Area)
- Other Open Space and Parks
- Louisville City Limits

**Map Symbols**

- On-Street Bike Lanes
- Concrete Trail
- Soft Surface Trail
- Trail Mileage Between Dots
- Overpass
- Underpass
- Parking
- Trailhead
- DOLA (Dog off Leash Area)
- No Dogs
- Fishing Pond or Lake
- Bike Repair Station (Louisville Library)
- School
- Railroad Tracks
- Creek
- Ditches & Laterals
- Lakes & Ponds

### Regulations

**Parks**

- Open daily from 6:00 a.m. to 10:00 p.m.
- Dogs must be on leash and under physical control at all times. Dog waste must be picked up and property disposed. Dogs may be off-leash in Community Park Dog Park only.

The following are prohibited:

- Alcohol
- Camping
- Commercial Use
- Drones
- Damage to Property
- Firearms & Archery
- Fires (except in grills)
- Fireworks
- Glass Containers
- Harassment of Wildlife
- Horses
- Hunting
- Littering
- Smoking
- Unauthorized Motorized Vehicles
- Unauthorized Parties

### Open Space

- Open daily one hour before sunrise to one hour after sunset
- Dogs must be on leash and under physical control at all times. Dog waste must be picked up and property disposed. Dogs may be off-leash in the Davidson Mesa off-leash area only.

The following are prohibited:

- Alcohol
- Building Trails
- Camping
- Commercial Use
- Damage to Property
- Drones
- Firearms & Archery
- Fires
- Fireworks
- Geocaching (Requires Permit)
- Glass Containers
- Harassment of Wildlife
- Horses
- Hunting
- Installing Private Improvements
- Littering & Dumping
- Storing Personal Property
- Unauthorized Motorized Vehicles (except in designated trailheads)

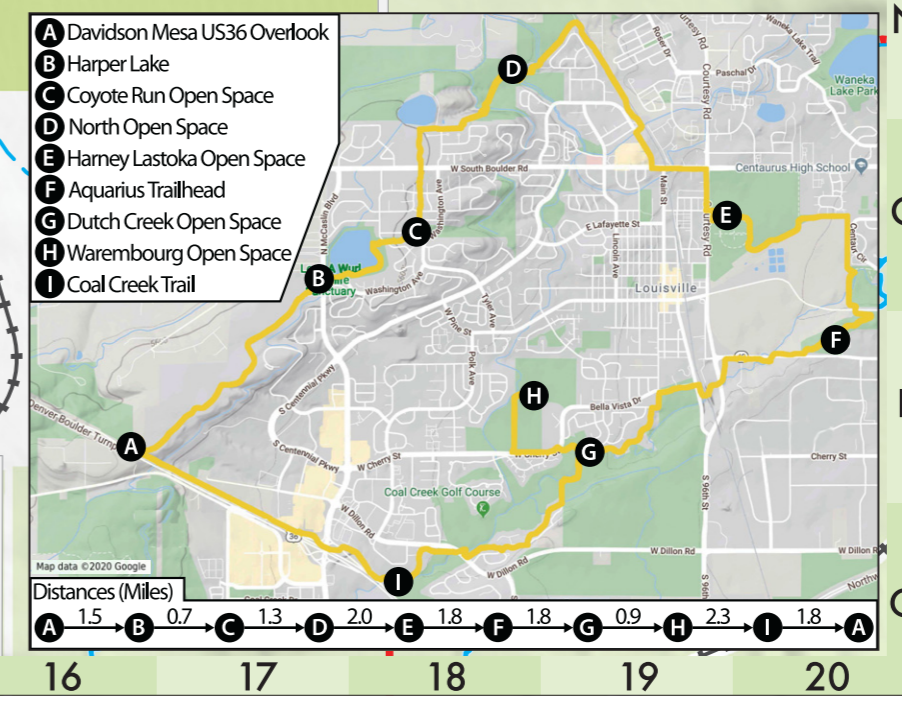
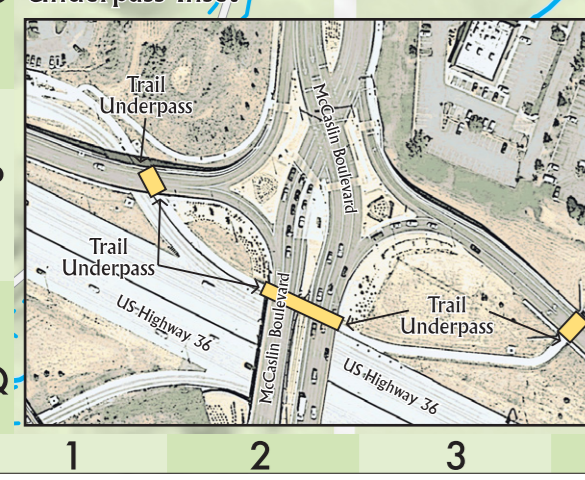
### Leon A. Wurl Wildlife Sanctuary Regulations:

- A permit is required for boating on Harper Lake
- Dogs prohibited

### Trails

Trails traverse various property designations. Regulations for each property designation apply to trails. The following rules apply to all City trails:

- Alcohol is prohibited.
- Bicycles and Level I & II e-Bikes are permitted.
- Bicycles must yield the right-of-way to other trail users.
- Dogs must be on leash and under physical control at all times. Dog waste must be picked up and property disposed.
- Horses are prohibited.
- Motorized vehicles prohibited except as authorized by the Americans with Disabilities Act (ADA).



**City of Louisville**  
 COLORADO • SINCE 1878  
 Parks, Open Space & Trails Map

Scale: 0 500 1000 1500 2000 Feet  
 0 0.1 0.2 0.3 0.4 0.5 Miles