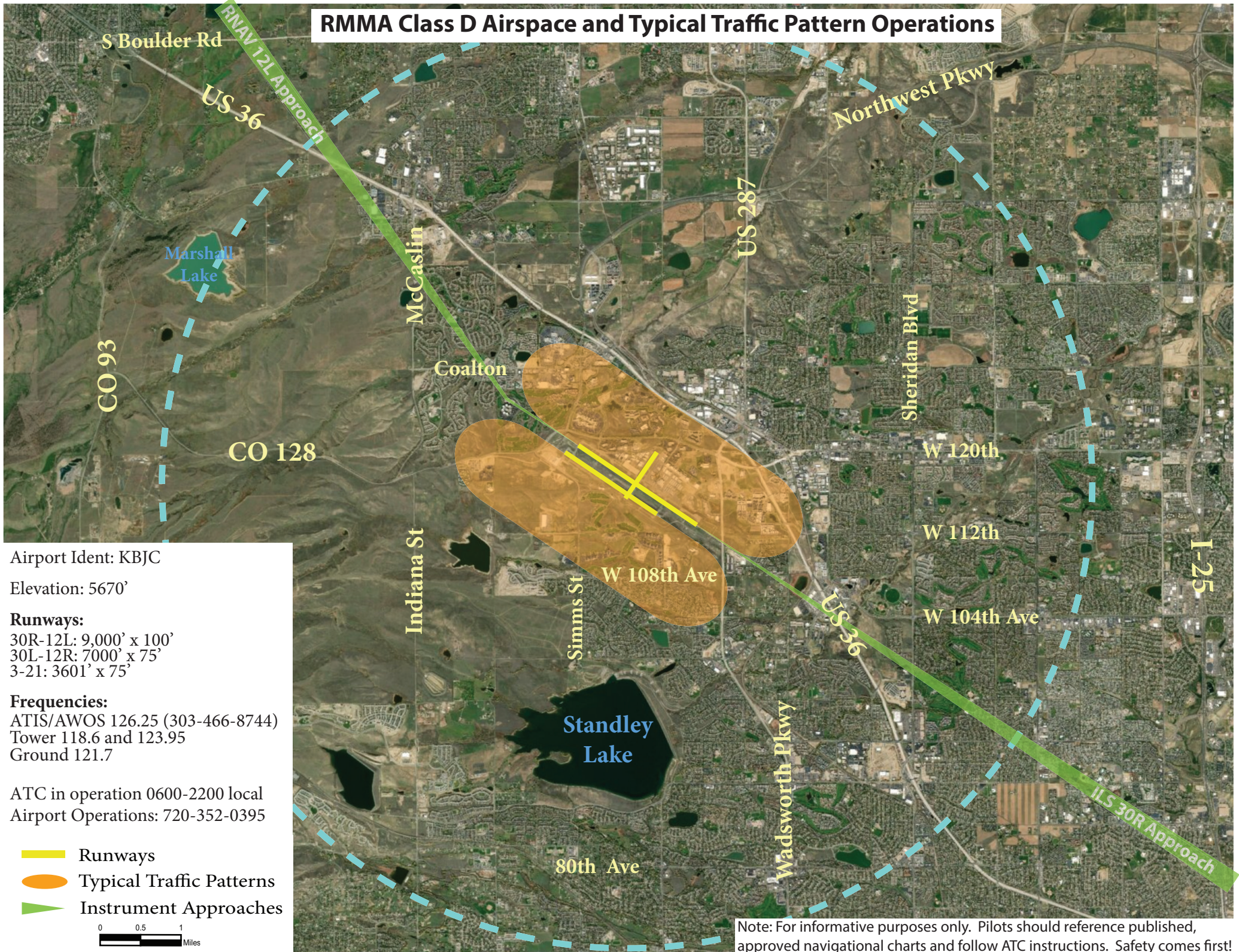
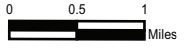


RMMA Class D Airspace and Typical Traffic Pattern Operations



Airport Ident: KBJC
 Elevation: 5670'
Runways:
 30R-12L: 9,000' x 100'
 30L-12R: 7000' x 75'
 3-21: 3601' x 75'
Frequencies:
 ATIS/AWOS 126.25 (303-466-8744)
 Tower 118.6 and 123.95
 Ground 121.7
 ATC in operation 0600-2200 local
 Airport Operations: 720-352-0395

- ▬ Runways
- ◉ Typical Traffic Patterns
- ▬ Instrument Approaches



Note: For informative purposes only. Pilots should reference published, approved navigational charts and follow ATC instructions. Safety comes first!