

Resource Number: 5BL7984
Temporary Resource Number: 157508414012

COLORADO CULTURAL RESOURCE SURVEY
Cultural Resource Re-evaluation Form

OAHP1405
Rev. 9/98

1. Resource Number: 5BL7984 2. Temp. Resource Number: 157508414012
2A. Address: 805 LaFarge Avenue, Louisville, CO 80027 Basement apartment is 805-1/2 LaFarge.
(Previous address prior to 1939: 317 LaFarge. Louisville addresses were changed in 1939.
LaFarge is sometimes spelled La Farge. Alternate addresses may be 805 La Farge and 317 La Farge.)

3. Attachments
(check as many as apply)
 Photographs
 Site sketch map
 U.S.G.S. map photocopy
 Other _____
 Other _____
4. Official determination
(OAHP USE ONLY)
 Determined Eligible
 Determined Not Eligible
 Need Data
 Nominated
 Listed
 Contributing to N.R. District
 Not Contributing to N.R. Dist

5. Resource Name: Historic name: Eberharter/Smith Store
Current name: Reis House

6. Purpose of this current site visit (check as many as apply)
 Site is within a current project area
 Resurvey
 Update of previous site form(s)
 Surface collection
 Testing to determine eligibility
 Excavation
 Other

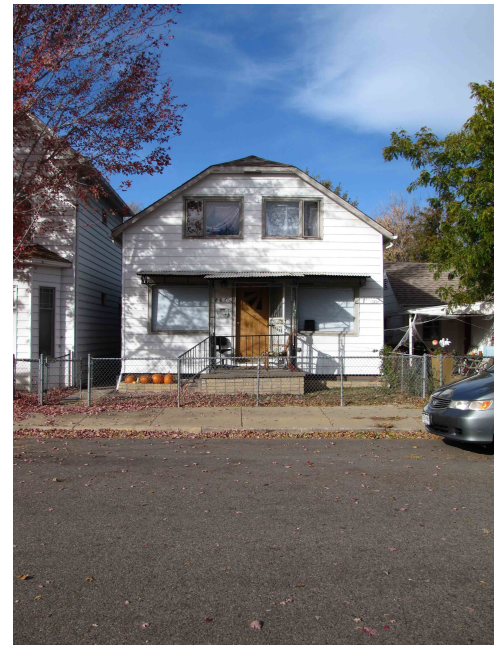
Describe: This property is within the Jefferson Place Subdivision in Louisville, which is being evaluated for historic district potential in 2010 – 2011. This resurvey is part of the historic district evaluation process.

7. Previous Recordings: Architectural Inventory Form 2000, as part of "Old Town" Louisville Historical Building Survey by Carl McWilliams of Cultural Resource Historians.

8. Changes or Additions to Previous Descriptions:

The physical condition of the building has not changed since 2000, although trim and windows are now painted tan rather than pale green. Additional description information is as follows. The north side has three small windows with awnings. The west side second floor of the original building has a wood sash window with a metal awning. There is a hipped-roof one-story addition on the west side of the house, with one four-light window and metal awning, a wood natural-finish door on the south side, and an opening on the north side of the addition that may be a door or window.

Construction History: In the 1930s the basement under the store and the adjacent house (801 LaFarge 5BL852) was excavated by hand. The two basements were, and continue to be, one continuous basement. The building's façade has had three different appearances. Prior to 1931 it had a false-front storefront with a pediment centered on the parapet. From 1931 until sometime between 1950 and 1956, the profile of the false front was changed to an eclectic Mission style profile and a large canvas awning was added to the east store windows. By 1956, the false front had been removed and the store was converted to a residence similar to its current appearance. Metal siding was installed in 1984.



Landscape or special setting description: Jefferson Place Subdivision is a historic residential neighborhood adjacent to downtown Louisville. The subdivision is laid out on a standard urban grid of narrow, deep lots with rear alleys. Houses are built to a fairly consistent setback line along the streets with small front lawns, deep rear yards and mature landscaping. Small, carefully maintained single-family residences predominate. Most of the houses are wood framed, one or one and one-half stories in height, featuring white or light-colored horizontal wood or steel siding, gabled or hipped asphalt shingled roofs and front porches. While many of the houses have been modified over the years, there is a clear intent to preserve the historic character of the neighborhood.

805 LaFarge was originally a general store, but its modified appearance does not convey that history, nor does its architectural design blend with other homes in the neighborhood. It does maintain a consistent scale with the rest of the neighborhood. The building is set very close to the front sidewalk, with a small grass lawn enclosed by a chain link fence. It is on the same property with, and very close to, 801 LaFarge, with which it is historically associated. The two buildings share a fenced back yard with a grass lawn. An outbuilding (garage and secondary residence) is at the west end of the common yard, and is described with 801 LaFarge (5BL852).

9. Changes in Condition: None.
10. Changes to Location or Size Information: None.
11. Changes in Ownership: Same ownership as 2000 inventory form.
12. Other Changes, Additions, or Observations:

Further research has yielded more information about the ownership and use of the building from when the Eberharter family owned it prior to the early 1930s, and some information about 801 and 805 La Farge from the time of the Smith ownership after the 1930s. These two properties (on Lots 1 and 2) have always been owned together.

- 1.) 805 La Farge was the store of Ludwig (sometimes referred to as "Louis") and Martha Baier Eberharter for nearly thirty years in the early 1900s and they had their residence next door at what is now 801 La Farge. Both Ludwig and Martha had been born in Germany and were part of Louisville's early German population. Martha Baier was living in Louisville by 1880, when she was 2 years old.

Martha and Ludwig Eberharter achieved prominence in Louisville after somewhat humble beginnings when Ludwig was a coal miner. They came to own many properties and had a number of business interests. Ludwig was mayor in 1914-15. After he died in the 1930s, Martha continued to look after their business interests. In 1990, the Louisville Historical Commission and Chamber of Commerce honored Martha Eberharter posthumously with the Louisville Pioneer Award. A January 17, 1990 article from *The Louisville Times* states that "[t]he couple managed a series of successful investments, including a general merchandise store located at the northwest corner of Spruce and LaFarge [sic].... Eberharter saw to it that local miners received credit at her store through the summer months when they were out of work."

According to their granddaughter, Claudine Eberharter Seader, the Eberharter cattle farm property located south of Boulder was taken by the federal government for the construction in the early 1950s of the Rocky Flats, a nuclear arms production complex. According to Seader, her grandparents also had an ownership interest in a local coal mine, the Hi-Way Mine, which was in operation from 1930 to 1954, and owned other businesses.

Charles C. Welch, the developer of Jefferson Place, sold Lots 1 and 2 of Block 5 (now the location of 801 and 805 La Farge) to his sister-in-law, Lucy Welch, in 1882. Other early owners were William Hart (1882-1892) and John and Helen Jasko (1892-1903). Martha Eberharter acquired Lots 1 and 2 in 1903. By 1904, she and her husband, Ludwig, were listed in the Louisville section of the Boulder County Directory as living at "Lafarge and Spruce," which would describe the location of 801 La Farge. Ludwig was listed as a "merchant."

The federal census records for 1910, 1920, and 1930, each show Martha and Ludwig Eberharter living on La Farge and having the general store. In 1910, Ludwig's occupation was listed as being the storekeeper of a general store, and Martha was the "sales lady" and their son, Frank, a "delivery boy."

Resource Number: 5BL7984

Temporary Resource Number: 157508414012

The Louisville sections of Boulder County Directories list the Eberharters and their grocery store throughout the 1903-1931 time period. The 1916 directory includes a listing of what they sold: "Genl mdse, Dry Goods, Groceries and Shoes, Wholesale Agts 'Pride of the Rockies' Flour." Before Louisville addresses changed in the late 1930s according to a certain formula, their home at the address of 306 La Farge and their store had the address of 308 La Farge.

Advertising for the Eberharter Store was included on a painted canvas movie curtain that dates from 1927-28 and is now part of the collection of the Louisville Historical Museum.

- 2.) Edward C. Smith purchased 801 and 805 La Farge from Martha Eberharter in 1931. Just as the Eberharters had done, Ed and his wife, Katherine Varra Smith, lived at 801 La Farge and operated a grocery store at 805 La Farge. Ed Smith was born in Colorado of English parentage, while Katherine was born in Colorado of Italian parentage.

According to an interview with the Smiths' son, Ray Smith, on July 7, 2009, Ray helped his father dig out the basement under the store at 805 La Farge using 5 gallon buckets. This took place when Ray was a child in the 1930s. Ed Smith also dug out the house basement at 801 La Farge by hand. The two basements were connected and there was one big basement under the two buildings.

Ray Smith also stated that Ed and Katherine moved the house at 801 La Farge back about 15 feet and over about 3 or 4 feet. They then moved into the store building at 805 La Farge and rented out the house at 801 La Farge. The Louisville sections of Boulder County Directories for 1958 and 1960 indicate that this likely occurred between 1958 and 1960, based on the change in the Smith's home address from 801 La Farge to 805 La Farge.

Sources of information

Boulder County "Real Estate Appraisal Card – Urban Master," on file at the Carnegie Library for State and Local History in Boulder, Colorado.

Boulder County Clerk & Recorder's Office and Assessor's Office public records, accessed through <http://recorder.bouldercounty.org>.

Directories of Louisville residents and businesses on file at the Louisville Historical Museum.

Census records and other records accessed through www.ancestry.com.

Archival materials on file at the Louisville Historical Museum, including a clipping of an article from *The Louisville Times* newspaper dated Jan 17, 1990 and entitled "Historical Society to honor Eberharter as local pioneer."

Interview of Ray Smith, July 7, 2009, and of Claudine Eberharter Seader, July 21, 2009, by Bridget Bacon, Museum Coordinator, Louisville Historical Museum.

13. National Register Eligibility Assessment:

Eligible Not eligible Need data

Explain: This property is not eligible to the National or State Registers. It has insufficient integrity due to the extensive modification of the front façade. The building lacks integrity of design, materials and association.

- 13A. Colorado State Register and Louisville Local Landmark: Not eligible due to loss of integrity.

- 13B. There is National Register as well as local historic district potential. This building would be noncontributing.

Discuss: This building is being recorded as part of a 2010-2011 intensive-level historical and architectural survey of Jefferson Place, Louisville's first residential subdivision, platted in 1880. The purpose of the survey is to determine if there is potential for National Register, State Register or local historic districts. Jefferson Place

Resource Number: 5BL7984

Temporary Resource Number: 157508414012

is eligible as a State Register historic district under Criterion A, Ethnic Heritage, European, for its association with European immigrants who first lived here and whose descendants continued to live here for over fifty years. The period of significance for the State Register historic district is 1881 – 1980. Jefferson Place is potentially eligible as a National Register historic district under Criterion A, Ethnic Heritage, European. However it needs data to determine dates of some modifications, and to more definitely establish the significant impacts of various European ethnic groups on the local culture of Louisville. The period of significance of a National Register district is 1881 – 1963. Jefferson Place is eligible as a local Louisville historic district under local Criterion B, Social, as it exemplifies the cultural and social heritage of the community.

European immigrant families flocked to Colorado coal mining communities, including Louisville, in the late nineteenth and early twentieth centuries in search of economic opportunities they could not find in their own countries. Louisville's Welch Coal Mine, along with other mines in the area, recruited skilled workers from western Europe. In the early years before 1900, most of the miners who lived in Jefferson Place came from English-speaking countries.

Immigrants from England brought a strong tradition and expertise in coal mining. The English are widely credited with developing the techniques of coal mining that were used locally, and they taught these techniques to other miners. The British mining culture was instilled in the early Colorado coal mines. English immigrants also brought expertise in other necessary skills such as blacksmithing and chain forging.

Later Jefferson Place residents arrived from Italy, France, Austria, Germany, Hungary, Slovakia, and Slovenia, among other places. The Italians eventually became the largest single ethnic group in Jefferson Place and in Louisville as a whole. About one-third of the houses in Jefferson Place were owned and occupied by Italian immigrants. Italian immigrants left their mark on Louisville in the food and beverage industries. To the present day, downtown Louisville is known throughout the Front Range for its tradition of Italian restaurants. The impacts of the heritage and customs of the other European ethnic groups could be significant, but are not well documented and need further investigation.

14. Management Recommendations: No action required.
15. Photograph Types and Numbers: 5BL7984_805LaFarge_01 through 5BL7984_805LaFarge_04
16. Artifact and Field Documentation Storage Location: Electronic files of forms with embedded photos and maps at Colorado Historical Society. Electronic files of forms, and electronic files of photographs at City of Louisville, Colorado, City Manager's Office.

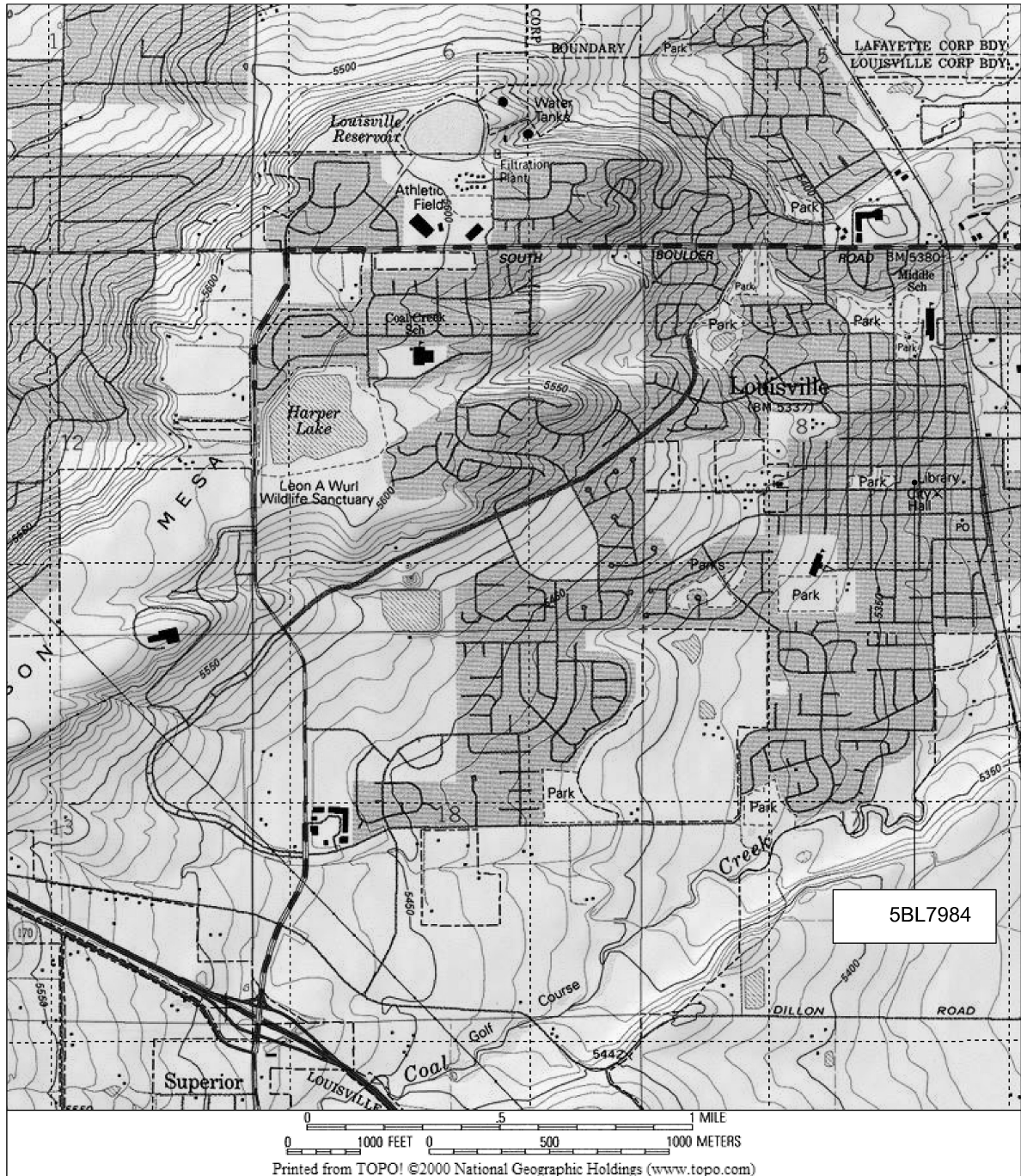
17. Report Title: Historical and Architectural Survey of Jefferson Place Subdivision, Louisville, Colorado
18. Recorder(s): Kathy and Leonard Lingo, and Bridget Bacon, City of Louisville 19. Date(s): 2013
20. Recorder Affiliation: Avenue L Architects, 3457 Ringsby Court Suite 317, Denver CO 80216 (303) 290-9930

Colorado Historical Society, Office of Archaeology & Historic Preservation
1560 Broadway, Suite 400, Denver, CO 80202
303-866-3395

Resource Number: 5BL7984
Temporary Resource Number: 157508414012

Resource Number: 5BL7984

Architectural Inventory Form
USGS Location Map



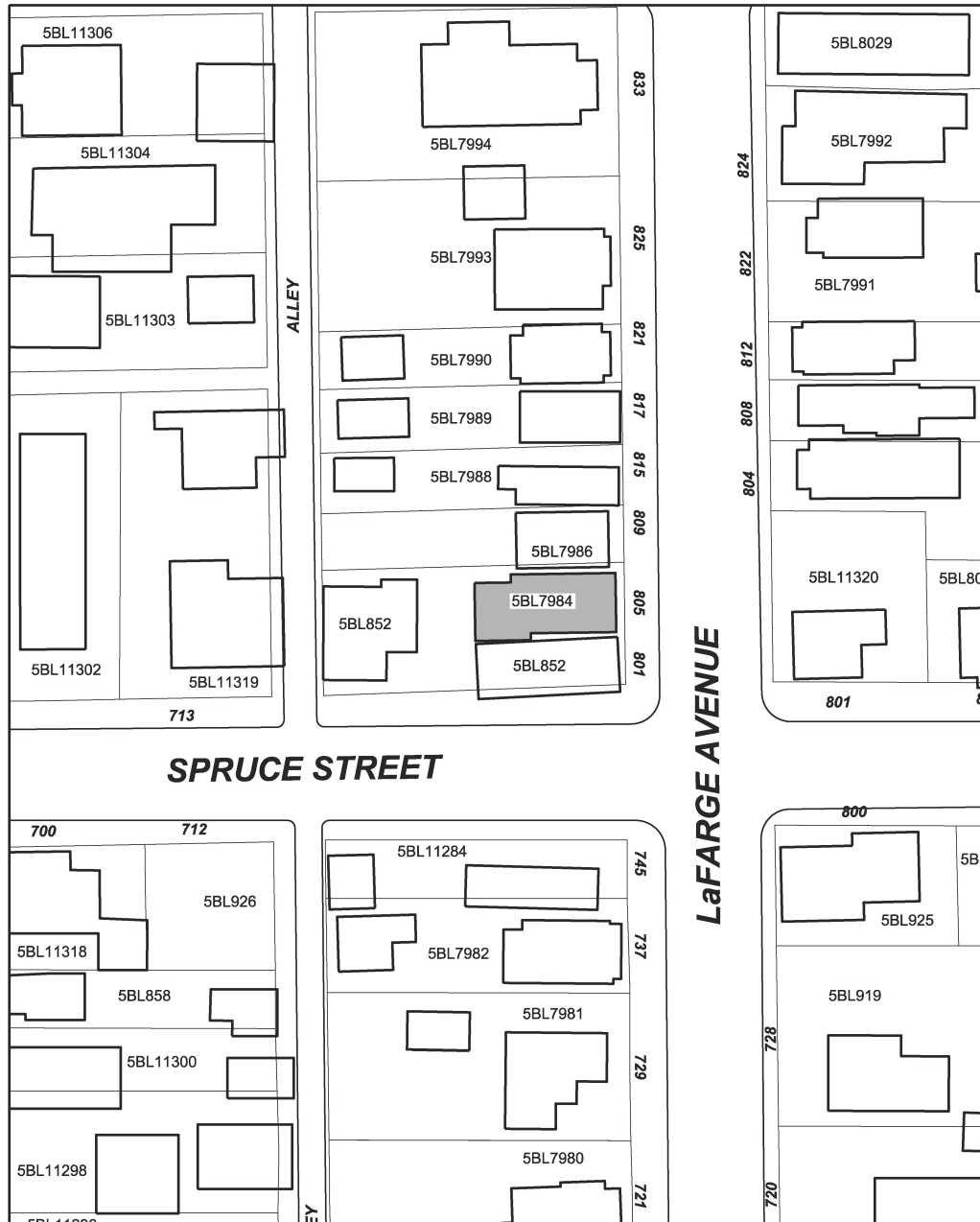
805 LaFarge Avenue, Louisville, Colorado

SOURCE: Extract of Louisville, Colorado
USGS map, 1994.



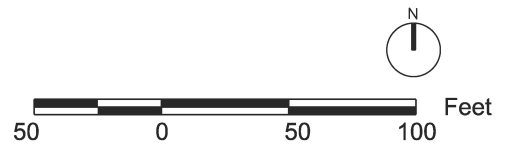
Resource Number: 5BL7984

Architectural Inventory Form
Site Location Map



805 Lafarge Avenue, Louisville, Colorado

SOURCE: City of Louisville, Colorado
GIS Files.



Resource Number: 5BL7984
Temporary Resource Number: 157508414012



5BL7984_805LaFarge_01 East

Resource Number: 5BL7984
Temporary Resource Number: 157508414012



5BL7984_805LaFarge_02 North

Resource Number: 5BL7984
Temporary Resource Number: 157508414012



5BL7984_805LaFarge_03 South

Resource Number: 5BL7984
Temporary Resource Number: 157508414012



5BL7984_805LaFarge_04 West

Resource Number: 5BL7984
Temporary Resource Number: 157508414012

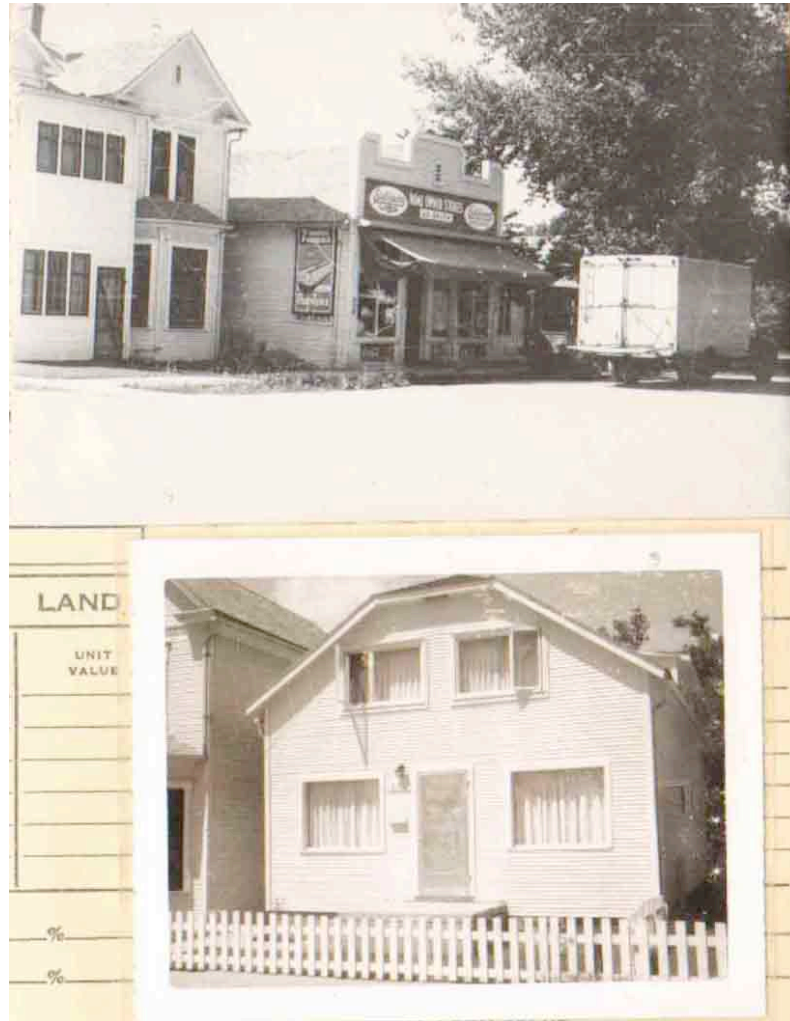


Undated photo, prior to 1931, Louisville Historical Museum 2009.049.004, donated by granddaughter of Martha and Ludwig Eberharter. 801 LaFarge (5BL852) is on the left and 805 LaFarge is on the right.



Undated photo, prior to 1931, Louisville Historical Museum 2009.049.005, donated by granddaughter of Martha and Ludwig Eberharter. 801 LaFarge (5BL852) is on the left and 805 LaFarge is on the right.

Resource Number: 5BL7984
Temporary Resource Number: 157508414012



Boulder County Appraisal Card photos. Upper photo, 1950; note false front parapet is of a different profile than the earlier photos. Lower photo, 1956 showing façade once again modified to its current design.